



American Marine & Boat Sales  
*The Power Boat Specialists*

**NICK KATSOULIS**  
American Marine & Boat Sales  
58 R Merrimac St. 2nd floor  
Newburyport, MA, US  
Office: 978-462-2323  
Mobile: 978-462-2323  
nick@usedpowerboats.com

# 2001 Sea Ray 290 Amber Jack

Boat Type: Express Cruiser

Address: Newburyport, MA, US

Price: \$39,995



## OVERVIEW

Great looking cruiser with modest fishing amenities that appeals both to a family friendly boat with excellent accommodations for all or a day on the boat catching with waves with friends. This boat includes standard rod storage and is in very good condition .

" OFF-LINE " includes a Ray 4K RL 70CRC Radar . VHF radio, GPS, and Fishfinder, Ritchie compass, Clarion AM/FM/CD with 6 CD disc changer making listening to your favorite music with enjoying a day on the water a breeze.

On a warm summer day if you need to get some refreshing air climb into the cabin and enjoy the 10,000 BTU reverse cycle heating/air conditioner system running off the Kohler Gen-set with only 103 hours !

**This is a VEE-DRIVE BOAT , NO OUTDRIVES**

Also included:

- 3 Batteries
- Windlass with Anchor
- Pressurized Hot and Cold Water
- VacuFlush Head
- Refrigerator
- electric single Burner Cook Top
- Microwave
- Swim Platform and Ladder
- Dinette and Dinette Conversion
- Transom Shower

Canvases Include:

- Bimini top
- Aft Curtain
- Side Curtain
- Unique Taylor Made Fast Back Canvas enclosure

This boat also includes a Kohler 5.0kw Generator ..  
Top end of engine's rebuilt 2018 75 Hrs of use since  
New fuel pumps & cool fuel systems 2022  
New Hot water heater 2022

## SPECIFICATIONS

### Basic Information

Manufacturer:	Sea Ray	Vessel Name:	OFF-LINE
Model:	290 Amber Jack	Boat Type:	Express Cruiser
Year:	290 Amber Jack	Hull Material:	Fiberglass
Category:	Power	Hull Type:	
Condition:	Used	Hull Color:	white
Location:	Newburyport, MA, US	Designer:	
Available for sale in U.S. waters:	Yes	Flag of Registry:	

### Dimensions & Weight

Length:	29 ft - 8.84 meter	Draft - max:	2 ft 10 in - 0.86 meter
LOA:	31 ft 4 in - 9.55 meter	Bridge Clearance:	-
Beam:	10 ft 6 in - 3.2 meter	Dry Weight:	11300 ft - 3444.24 meter

Engine

Make:		Engine Type:	Inboard
Model:	MPI 350	Drive Type:	V Drive
Engine(s):	2	Fuel Type:	
Hours:	593	Horsepower:	300 (Individual), 600 (combined)
Cruise Speed:	24 MPH	Max Speed:	-
Range:	-	Joystick Control:	No

Tank Capacities

Fuel Tank:	230 gallons - 2 tank(s)	Holding Tank:	28 gallons - 1 tank(s)
Fresh Water Tank:	30 gallons - 1 tank(s)		

Accommodations

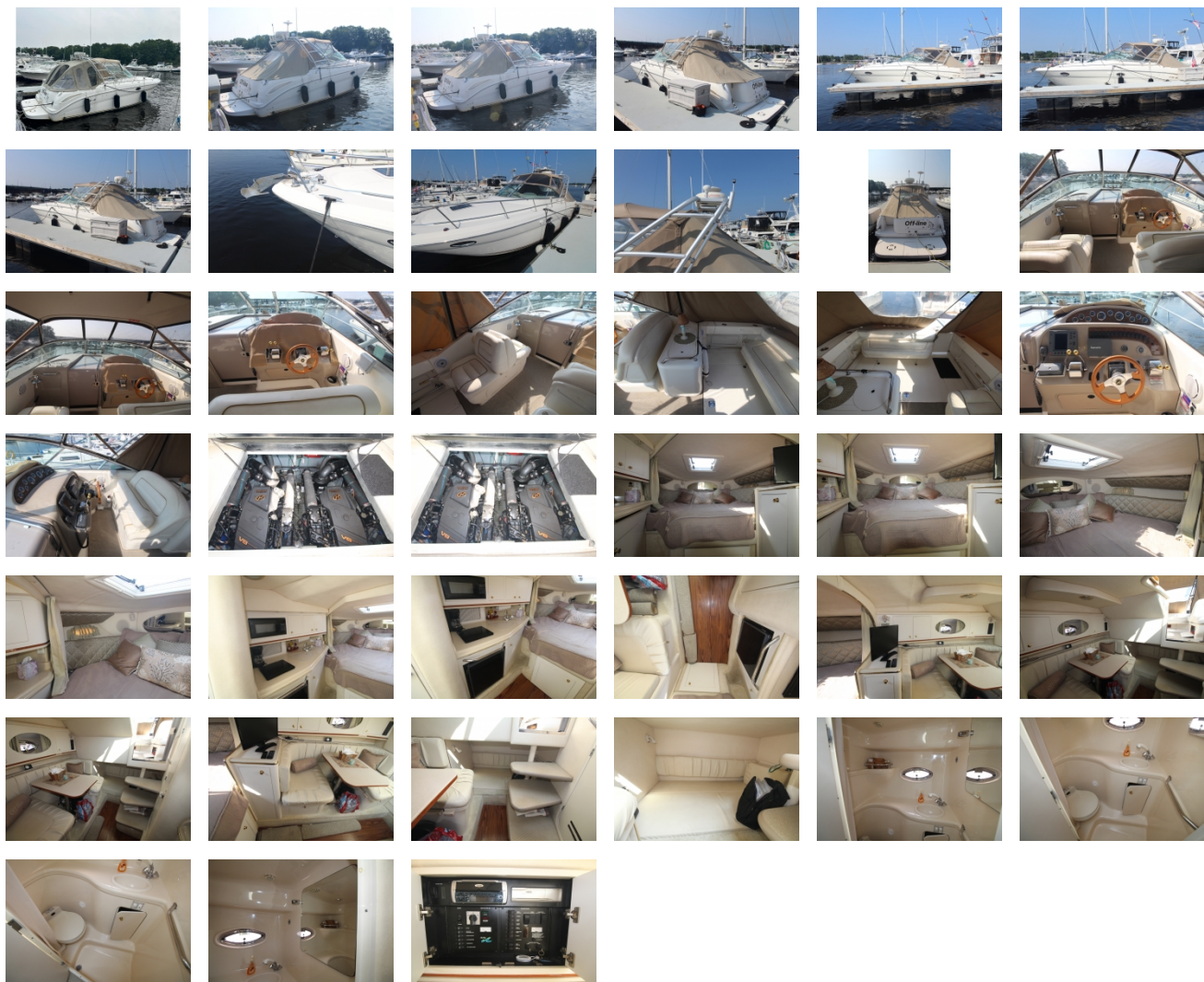
Total Cabins:	1	Crew Cabins:	-
Total Berths:	6	Crew Berths:	-
Total Sleeps:	-	Crew Sleeps:	-
Total Heads:	1	Crew Heads:	-
Captains Cabin:	-		

DESCRIPTIONS

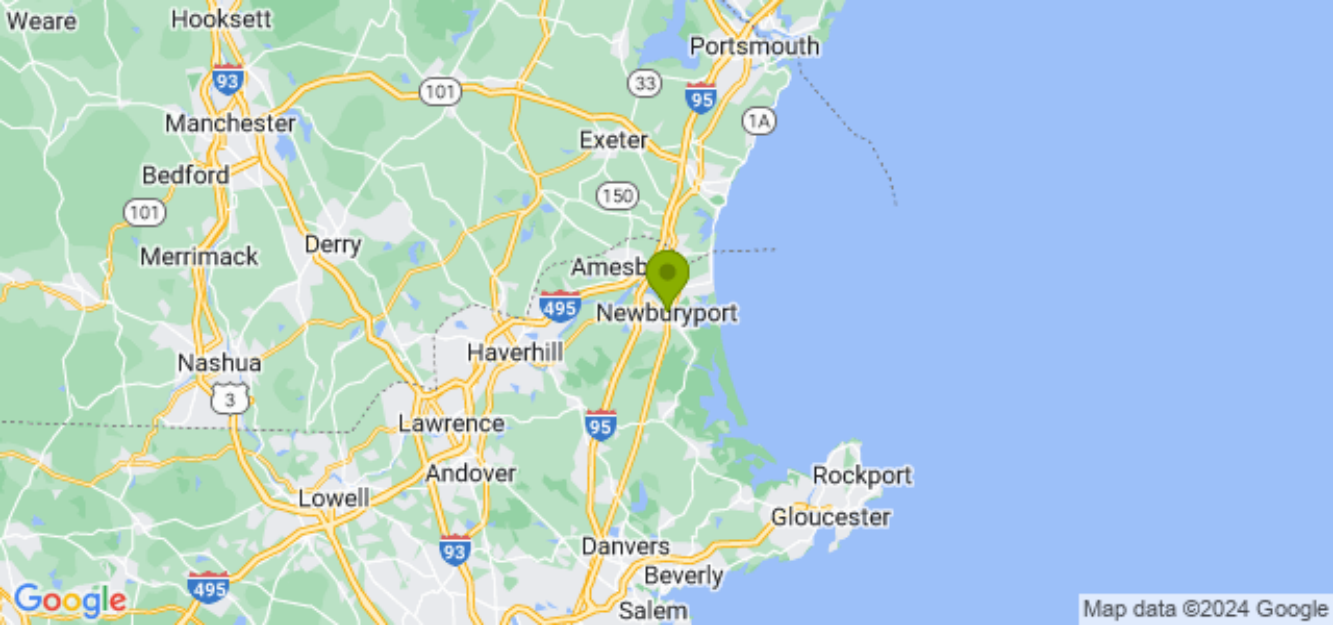
The Sea Ray 290 Amberjack is the answer to the fervent prayers of both sportfishermen and cruising enthusiasts alike. This sport cruiser features comfort and performance and is powered by twin MPI 350 HORIZONS

VEE DRIVE VESSEL

GALLERY



LOCATION MAP





**American Marine & Boat Sales**  
*The Power Boat Specialists*

**NICK KATSOULIS**  
**American Marine & Boat Sales**  
58 R Merrimac St. 2nd floor  
Newburyport, MA, US  
Office: 978-462-2323  
Mobile: 978-462-2323  
[nick@usedpowerboats.com](mailto:nick@usedpowerboats.com)

---