



American Marine & Boat Sales
The Power Boat Specialists

NICK KATSOU LIS
American Marine & Boat Sales
58 R Merrimac St. 2nd floor
Newburyport, MA, US
Office: 978-462-2323
Mobile: 978-462-2323
nick@usedpowerboats.com

2017 Sea Ray 400 Sundancer

Boat Type: Express Cruiser

Address: North Shore, MA, US

Price: \$499,000



OVERVIEW

" **Lizzy** " is a mid-range sport cruiser with an enclosed main deck salon and distinctive hull-side windows. Entering through sliding glass doors, huge windows in the Sundancer's opulent single level salon fill the entire area with natural light. The galley is forward to port, right across from the helm - the perfect place for socializing at dockside or when underway. Elegant hardwood flooring, high-end galley appliances, an ergonomic helm with joystick controls combine to make this one of the most elegant interiors of any boat in this class. The master stateroom seems unusually spacious thanks to the large hull windows. The cockpit, with L-shaped seating to starboard and a single seat to port, can be shaded by a power awning that extends from the hardtop. The Cummins QSB 480hp V-drive diesels will cruise at 20-24 knots.

115 Hrs

One Owner

Second Head w/Shower 15k option

Transom Grill

Teak Cockpit

Please look at " [Additional Features & Equipment](#) " for all the details

SPECIFICATIONS

Basic Information

Manufacturer:	Sea Ray	Vessel Name:	LIZZY
Model:	400 Sundancer	Boat Type:	Express Cruiser
Year:	400 Sundancer	Hull Material:	Fiberglass
Category:	Power	Hull Type:	Modified Vee
Condition:	Used	Hull Color:	white
Location:	North Shore, MA, US	Designer:	
Available for sale in U.S. waters:	Yes	Flag of Registry:	

Dimensions & Weight

Length:	40 ft - 12.19 meter	Draft - max:	3 ft 4 in - 1.01 meter
LOA:	-	Bridge Clearance:	-
Beam:	13 ft 6 in - 4.11 meter	Dry Weight:	31391 ft - 9567.98 meter

Engine

Make:	Cummins	Engine Type:	Inboard
Model:	QSB 6.7 480 T3 NON DTS	Drive Type:	
Engine(s):	2	Fuel Type:	Diesel
Hours:	115	Horsepower:	480 (Individual), 960 (combined)
Cruise Speed:	-	Max Speed:	-
Range:	-	Joystick Control:	No

Tank Capacities

Fuel Tank:	320 gallons - 1 tank(s)	Holding Tank:	42 gallons - 1 tank(s)
Fresh Water Tank:	100 gallons - 1 tank(s)		

Accommodations

Total Cabins:	2	Crew Cabins:	-
Total Berths:	6	Crew Berths:	-
Total Sleeps:	6	Crew Sleeps:	-
Total Heads:	2	Crew Heads:	-
Captains Cabin:	-		

DESCRIPTIONS

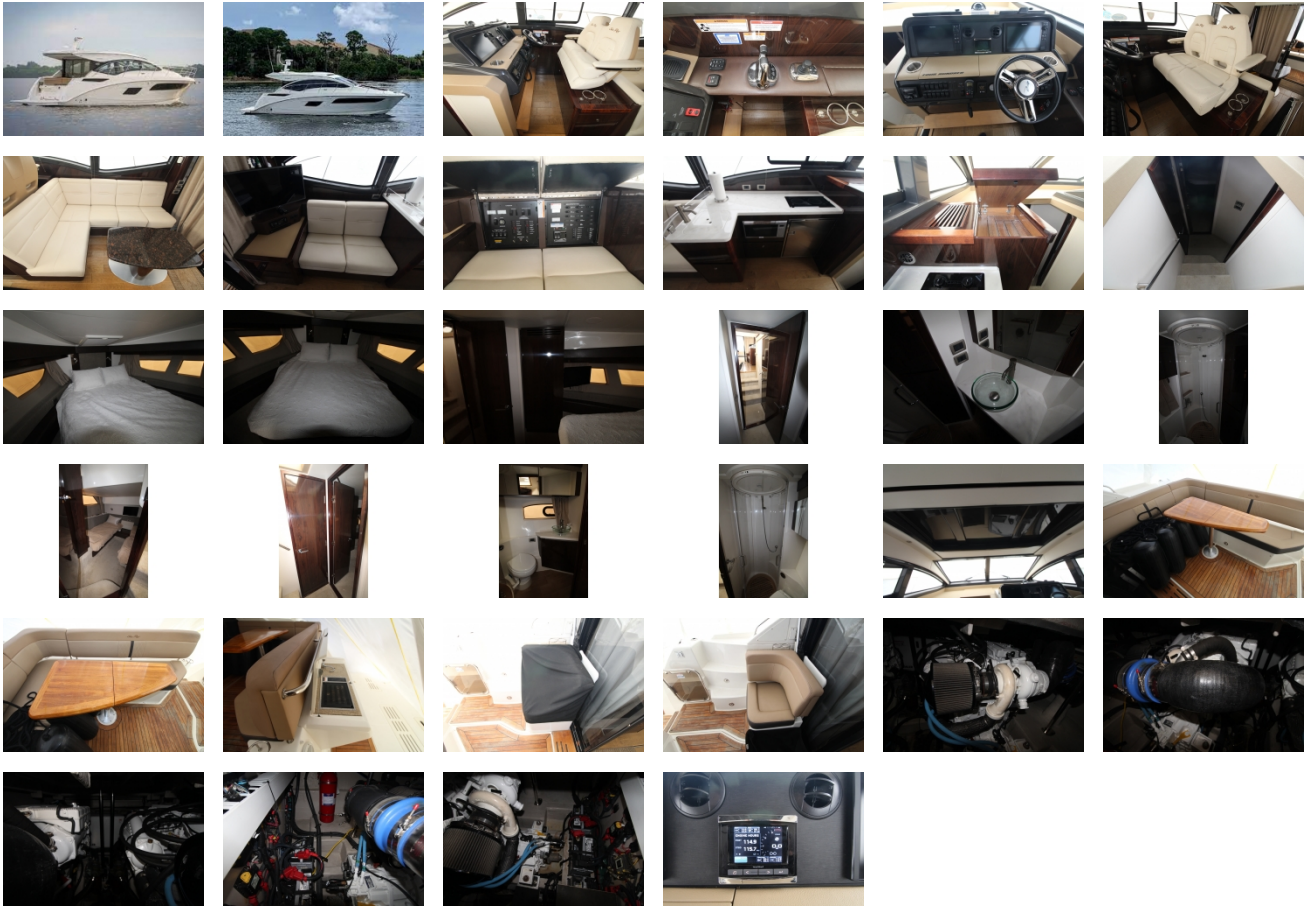
Amenities and Equipment

Interior Stereo Upgrade
Salon Sofa with Pull-Out Bed
Screen for Salon Door
Second Head, V-Berth
Table - Hi/Low - Salon
TV FS with DVD/Gaming Port - Mid Cabin
Macerator with Seacock Interlock System
Mesh Windshield Shade
Awning, Electric Retractable over Cockpit
Bow Rail Split
Cockpit Carpet Liner
Extended Swim Platform
Lighting, Underwater - Transom - White
Rod Holders (2)
Table, Cockpit - Natural Teal with Cover
Teak Flooring - Standard and Stb Platform
Transom Gourmet Space with Grill
Windshield with Opening Side Window, Port and Stb
Yacht Flag and Flag Pole
Anchor Wash Down System
I/B Joystick Docking System with Bow Thrusters
Oil Exchange System
Fuel Transfer Pump
Bow, Deck and Hand Rails
Cleats, Thru-Bolted, SS (8)
Spotlight, Halogen-Remote Controls
Swim Platform, Integral with Concealed Swim Ladder
Canvas Bow Sunpad Cover
Canvas Cockpit Seat Covers
Anchor, Galvanized
Windlass, Rope/Chain with Foot Switch
Central Vacuum System
Air Conditioning/Heating
Fire Suppression System
Bilge Pump
VacuFlush Head System
Holding Tank with Dockside Pump-Out

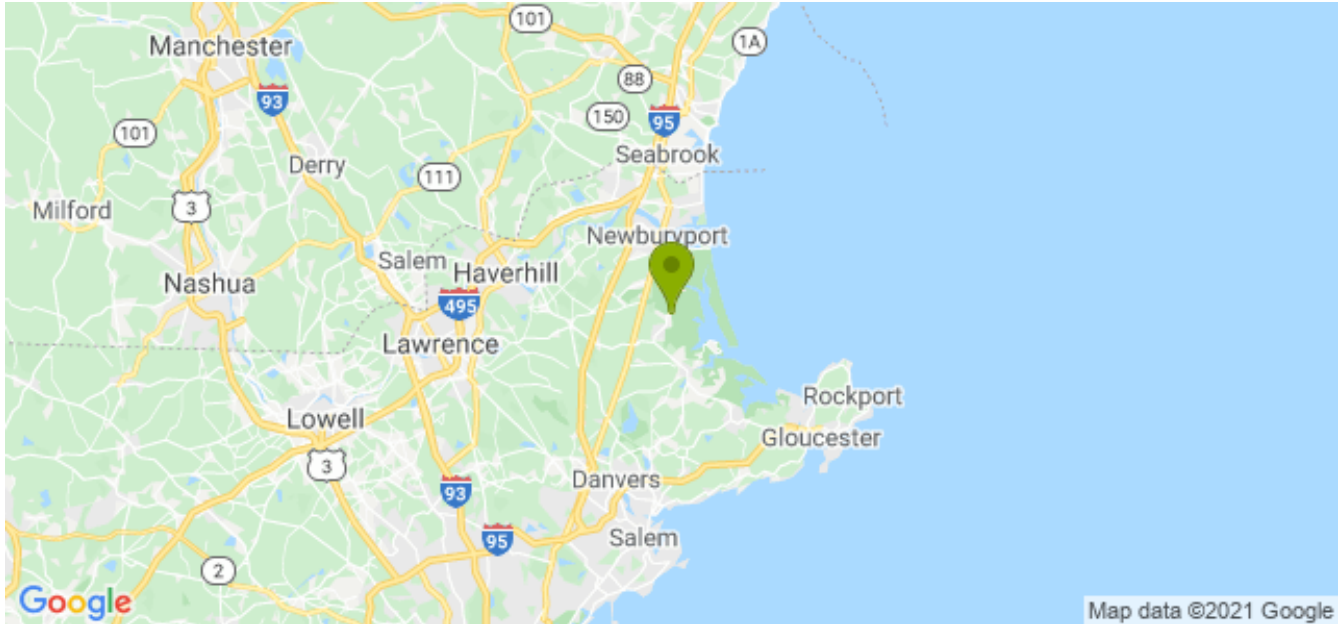
Navigation Equipment:

I/B Joystick Docking System w/Bow Thrusters
Compass
Raymarine 125W GPS/Chartplotter with Integrated Closed Dome Radar
VHF Radio with 8" Antenna
Shore Power with 50' Cord and Cablemaster
11.0kW Generator

GALLERY



LOCATION MAP



American Marine & Boat Sales
The Power Boat Specialists

NICK KATSOU LIS
 American Marine & Boat Sales
 58 R Merrimac St. 2nd floor
 Newburyport, MA, US
 Office: 978-462-2323
 Mobile: 978-462-2323
 nick@usedpowerboats.com