



American Marine & Boat Sales  
*The Power Boat Specialists*

**NICK KATSOU LIS**  
American Marine & Boat Sales  
58 R Merrimac St. 2nd floor  
Newburyport, MA, US  
Office: 978-462-2323  
Mobile: 978-462-2323  
nick@usedpowerboats.com

# 2013 Sea Ray 280 Sundancer

Boat Type: Express Cruiser

Address: Newburyport, MA, US

Price: \$84,900



## OVERVIEW

**Mint Condition !!**

**175 Hours !!**

**Bow Thruster**

**Camper Back !**

**A/c and Heat**

**Cockpit Grill**

**Swivel Helm Seat**

**See Descriptions for all the details**

SPECIFICATIONS

Basic Information

Manufacturer:	Sea Ray	Vessel Name:	Seaing is Believing
Model:	280 Sundancer	Boat Type:	Express Cruiser
Year:	280 Sundancer	Hull Material:	
Category:	Power	Hull Type:	
Condition:	Used	Hull Color:	white
Location:	Newburyport, MA, US	Designer:	
Available for sale in U.S. waters:	Yes	Flag of Registry:	

Dimensions & Weight

Length:	28 ft - 8.53 meter	Draft - max:	3 ft 5 in - 1.04 meter
LOA:	28 ft 8 in - 8.74 meter	Bridge Clearance:	-
Beam:	8 ft 10 in - 2.69 meter	Dry Weight:	8211 ft - 2502.71 meter

Engine

Make:	MerCruiser	Engine Type:	Inboard / Outboard
Model:	350 Mpi	Drive Type:	Stern Drive
Engine(s):	1	Fuel Type:	Gas/Petrol
Hours:	175	Horsepower:	300 (Individual), 300 (combined)
Cruise Speed:	-	Max Speed:	-
Range:	-	Joystick Control:	No

Tank Capacities

Fuel Tank:	84 gallons - 1 tank(s)	Holding Tank:	28 gallons - 1 tank(s)
Fresh Water Tank:	28 gallons - 1 tank(s)		

Accommodations

Total Cabins:	1	Crew Cabins:	-
Total Berths:	4	Crew Berths:	-
Total Sleeps:	4	Crew Sleeps:	-
Total Heads:	1	Crew Heads:	-
Captains Cabin:	-		



## DESCRIPTIONS

Our 280 Sundancer focuses on flexibility with a reversible doublewide helm seat, fold-down sun pad, wet bar with available stainless-steel barbecue grill, and refined interior that sleeps four and features wood-finished cabinets.

### Key Features

- Cockpit wet bar with Corian® countertop.
- Convertible dinette with dedicated V-berth filler cushion and table storage.
- Curved portside L-shaped lounge w/storage below
- Electrically actuated engine access hatch for easy access to the engine room.
- Full galley with sink, stove, refrigerator, & microwave.
- Integral swim platform with four-step swim ladder and grab handle.
- Wood finish interior cabinets.
- Removable carry-on cooler with designated storage.
- SmartCraft® Diagnostics System standard.
- Standard VacuFlush® head.
- Standard full canvas (aft curtain, bimini top w/boot, front curtains, side curtains and a canvas storage bag).
- Mercury Installation Quality Certification – standard 2-year limited engine warranty.

- Beverage Holders (7)
- Boarding Steps
- Cooler
- Door
- Engine Room Hatch
- Fiberglass Floor Liner
- Glove Box
- Helm Seating
- Indirect Lighting
- Lockable Door
- Outlet
- Port Seating
- Sport Spoiler
- Transom Seating
- Wet Bar

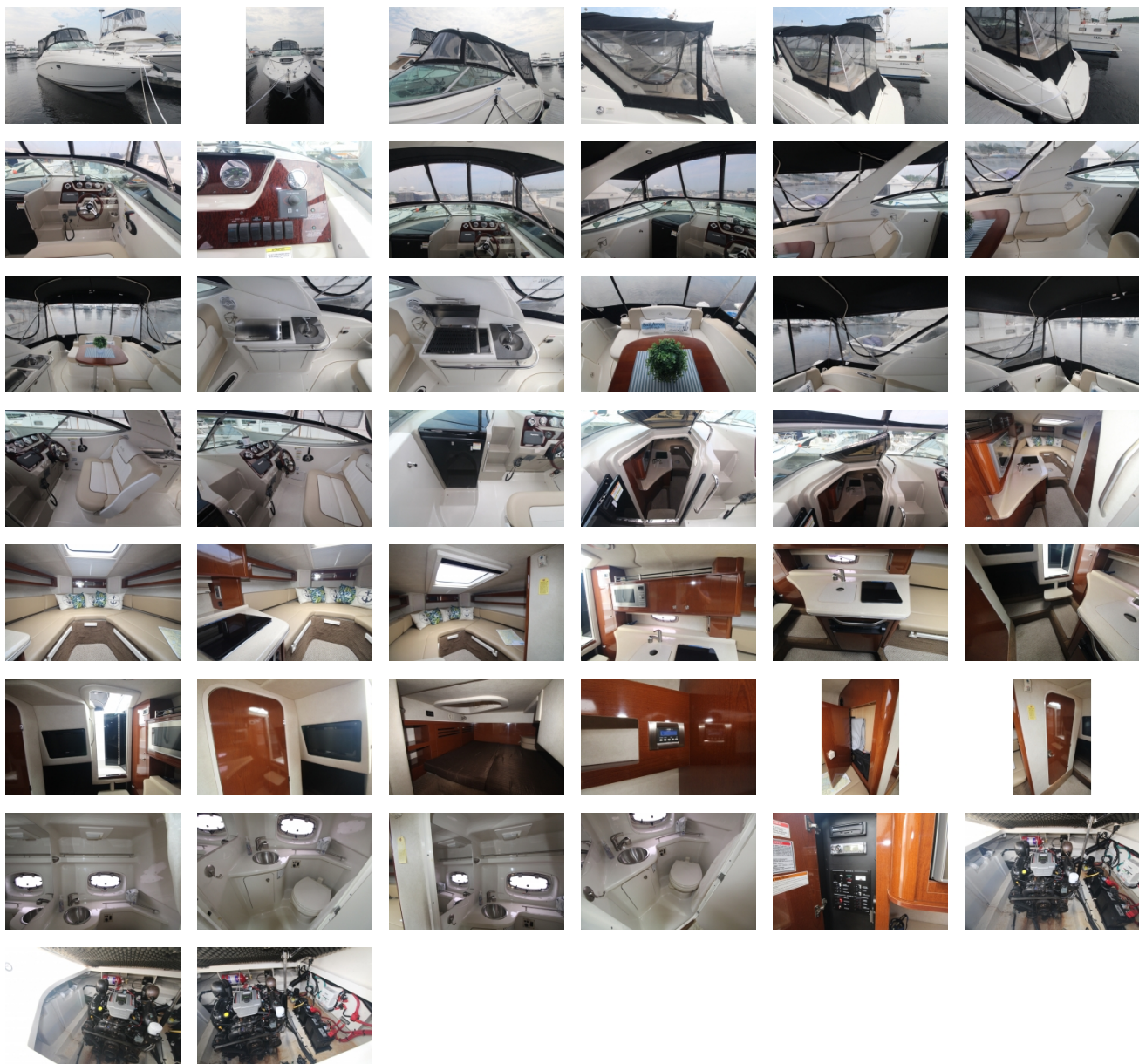
- Countertop
- Handrail
- Microwave
- Outlet
- Refrigerator
- Storage
- Stove, 120V/60 Cycle, Alcohol/ Electric (Single Burner)
- Trash Receptacle

- Bow & Stern Eyes
- Bow Rail
- Cleats (6)
- Deck Fill Plates
- Drain Plug
- Gel Coat
- Graphics
- Handrail
- Hatch
- Navigation Lights
- Portlights
- Resin
- Rub Rail
- Shipping Cover
- Ski Tow Eye
- Skylight
- Storage
- Storage
- Stringer System
- Swim Platform
- Thru-Hull Fittings Stainless Steel
- Vent System
- Windshield
- Windshield Wiper

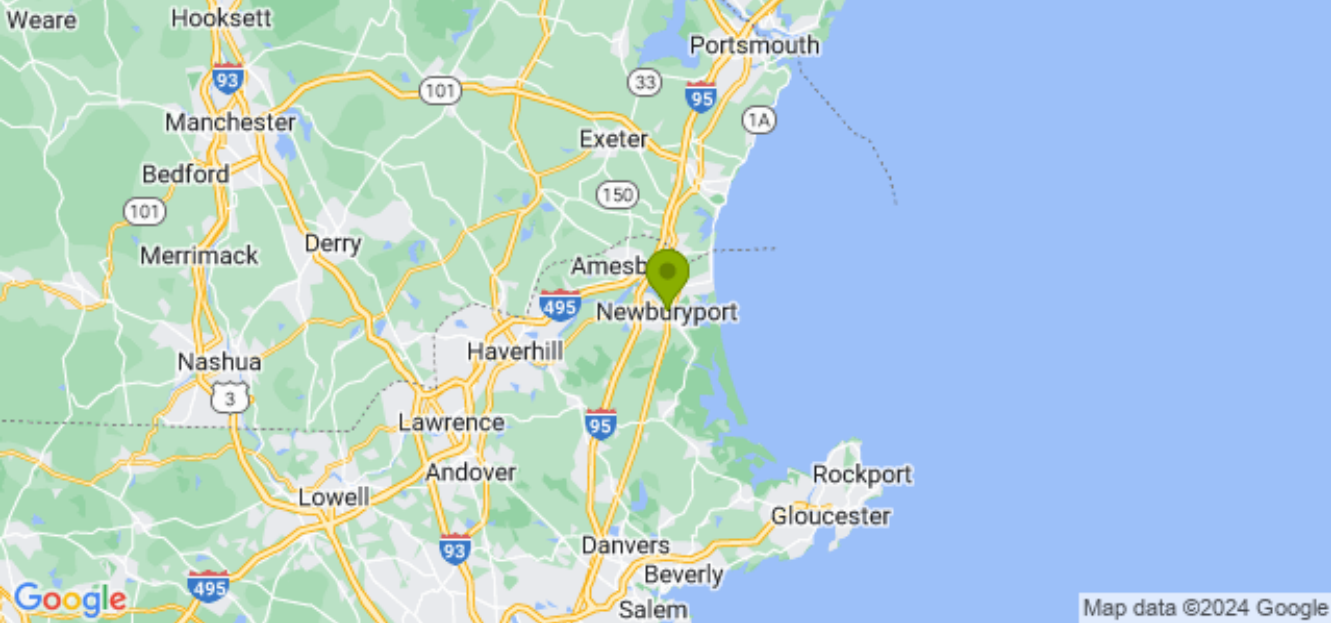




GALLERY



LOCATION MAP





# American Marine & Boat Sales

*The Power Boat Specialists*

**NICK KATSOULIS**  
American Marine & Boat Sales  
58 R Merrimac St. 2nd floor  
Newburyport, MA, US  
Office: 978-462-2323  
Mobile: 978-462-2323  
[nick@usedpowerboats.com](mailto:nick@usedpowerboats.com)

---