



American Marine & Boat Sales
The Power Boat Specialists

NICK KATSOULIS
American Marine & Boat Sales
58 R Merrimac St. 2nd floor
Newburyport, MA, US
Office: 978-462-2323
Mobile: 978-462-2323
nick@usedpowerboats.com

2000 Silverton 392 Aft Cabin

Boat Type: Aft Cabin

Address: Gloucester, MA, US

Price: **\$149,900**



OVERVIEW

The Silverton 392 is one of the most innovative boat designs ever. Her well thought out "Sidewalk" design allows easy access from the flybridge to the forward deck while allowing for a full beam salon. That's right, the salon area makes full use of the boat's 14' beam and feels like you are in a much larger yacht.

Some exterior highlights include a large extended swim platform, roomy sundeck with a hardtop and refreshment center, and a spacious flybridge with stadium seating that provides easy viewing of the scenery for the captain and guests.

On the inside, this yacht features an L-shaped lounge with pull out berth and a comfortable dinette located conveniently across from the galley. The galley has solid surface counters, an electric three burner stove and oven, New microwave, New Refrigerator and a deep sink.

Her accommodations include a master with walk around berth and direct access to the master head that includes a stall shower. Forward, there is a guest stateroom with a double berth and access to its own head, also with stall shower.

" **Jet Lag** " is **CATERPILLAR 3126** fresh water cooled direct drive motors with only **635 Hours** , A Kohler 8.0kw generator with only 287 Hours !, reverse cycle heating and air conditioning throughout, and a lot more. **BOW THRUSTER** . Have a look at the full specs and give us a call to arrange seeing this well cared for yacht.

Hull and Deck Features

- Horizontal mount windlass
- Remote spotlight
- Extended swim platform
- Transom utility locker with 50 amp power and water hook-up
- Through bolted stainless steel deck hardware
- Stainless steel bow rail
- White gel coat
- Transom door
- Sundeck hardtop
- Electronics mast
- Indirect cockpit lighting
- Port and starboard side deck access doors
- Full canvas enclosures flybridge
- Bow sun pad

Technical and System Features

- Kohler 8.0 kw Generator (287 hours)
- Reverse cycle Heating and Air Conditioning
- Water heater (11 Gallons)
- Three bank battery charger
- Dockside water inlet
- Automatic fire suppression system
- Carbon monoxide detectors
- Engine room lights
- Hydraulic trim tabs
- Compass
- Automatic bilge pumps
- Oil x-change-r changing system

Helm Features

- Full suite of electronics
- Rubber coated rocker switches
- Great forward visibility
- Ample guest accommodations
- Rear site window for aft visibility

Electronics

- Raytheon RL70 Radar GPS display
- Raytheon Chart-plotter
- Auto-Pilot
- Raytheon TriData RT60 Depth gauge
- Raytheon Ray VHF radio
- Flat Tv

Galley Features

- New Refrigerator 2022
- electric 3 burner stove and oven
- New microwave 2022
- Solid surface countertop
- Deep sink with hot and cold water
- Abundant storage cabinets

Guest Stateroom Features

- Double berth
- Hanging lockers port and starboard
- Two drawers below berth and additional locker
- Mirrored forward bulkhead
- Two opening portlights
- Overhead hatch
- Direct access to guest head

Guest Head Features

- Spacious vanity with mirrored cabinet above sink
- Multiple storage cabinets
- Electric flush toilet
- Separate stall shower with glass enclosure
- Opening portlight
- Towel racks

Master Stateroom Features

- Walk around queen berth
- Two hanging lockers
- Large rear ventilation/safety hatch
- Opening portlights
- High quality blinds

Master Head Features

- Spacious vanity with mirrored cabinet above sink
- 110 volt outlet
- Multiple storage cabinets
- Electric flush toilet
- Separate stall shower with glass enclosure
- Two opening portlights
- Towel racks

Disclaimer

SPECIFICATIONS

Basic Information

Manufacturer:	Silverton	Vessel Name:	Jet Lag
Model:	392 Aft Cabin	Boat Type:	Aft Cabin
Year:	392 Aft Cabin	Hull Material:	Fiberglass
Category:	Power	Hull Type:	
Condition:	Used	Hull Color:	white
Location:	Gloucester, MA, US	Designer:	
Available for sale in U.S. waters: Yes		Flag of Registry:	

Dimensions & Weight

Length:	43 ft - 13.11 meter	Draft - max:	-
LOA:	9 ft - 2.74 meter	Bridge Clearance:	-
Beam:	14 ft 1 in - 4.29 meter	Dry Weight:	23577 ft - 7186.27 meter

Engine

Make:	Caterpillar	Engine Type:	Inboard
Model:	3126	Drive Type:	Direct Drive
Engine(s):	2	Fuel Type:	Diesel
Hours:	635	Horsepower:	420 (Individual), 840 (combined)
Cruise Speed:	-	Max Speed:	-
Range:	-	Joystick Control:	No

Tank Capacities

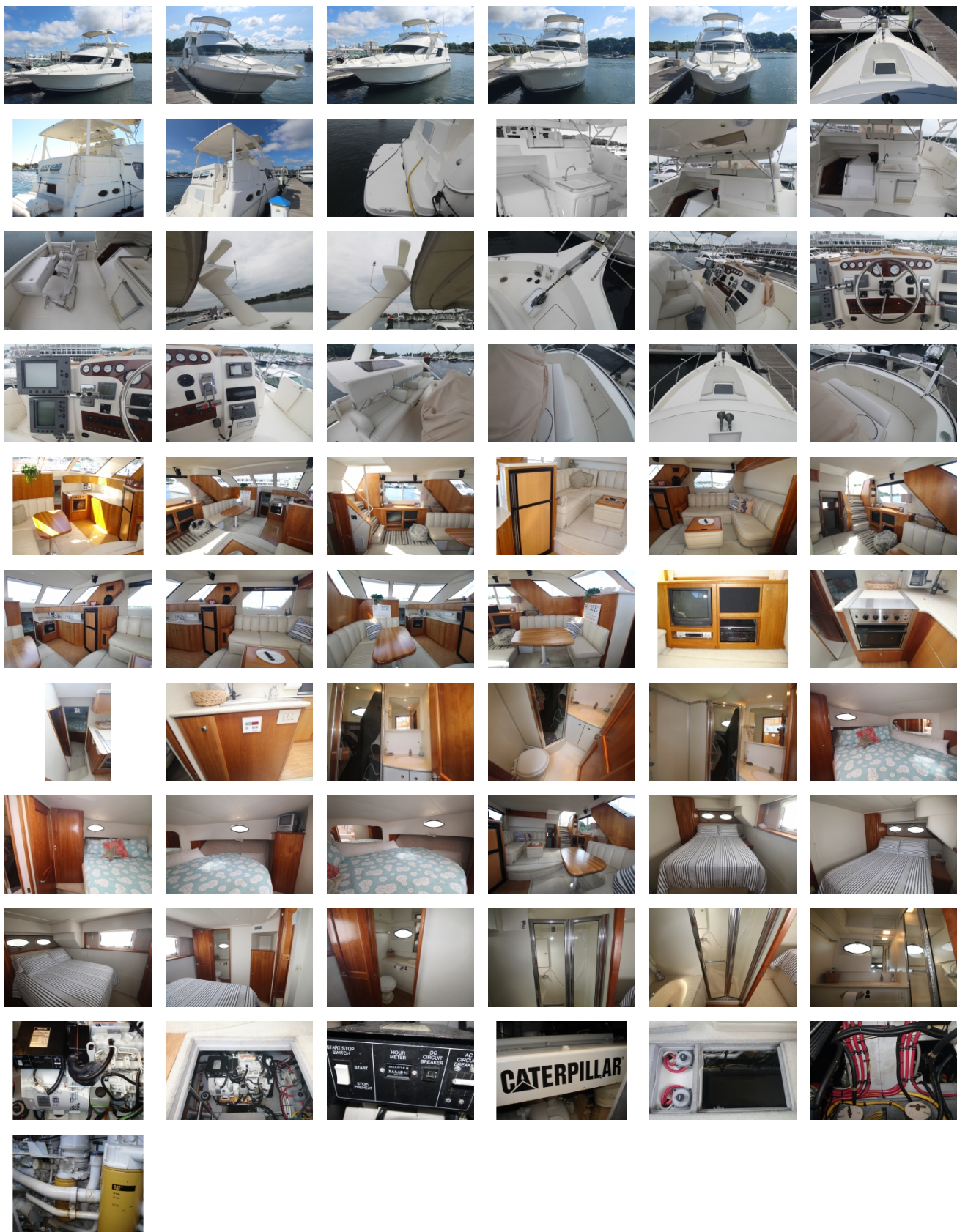
Fuel Tank:	286 gallons - 1 tank(s)	Holding Tank:	60 gallons - 1 tank(s)
Fresh Water Tank:	100 gallons - 1 tank(s)		

Accommodations

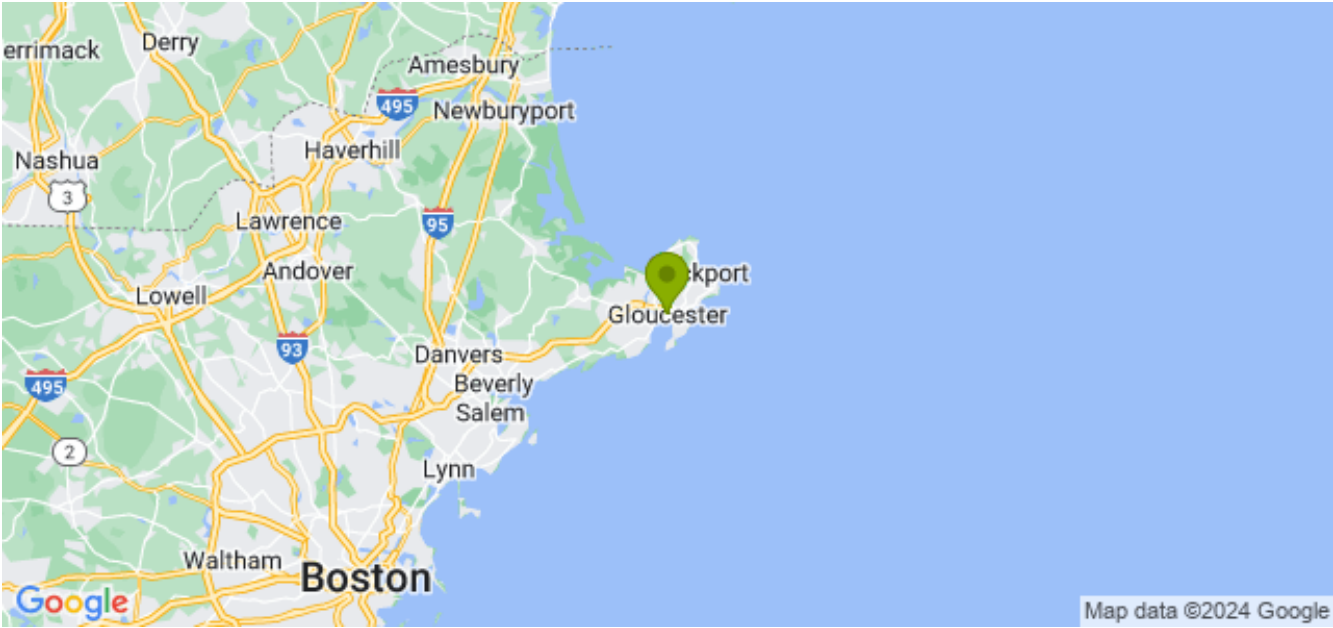
Total Cabins:	2	Crew Cabins:	-
Total Berths:	-	Crew Berths:	-
Total Sleeps:	6	Crew Sleeps:	-
Total Heads:	2	Crew Heads:	-
Captains Cabin:	-		

DESCRIPTIONS

GALLERY



LOCATION MAP



 <div data-bbox="268 831 798 936"><h2>American Marine & Boat Sales</h2><p><i>The Power Boat Specialists</i></p></div>	<p>NICK KATSOULIS American Marine & Boat Sales 58 R Merrimac St. 2nd floor Newburyport, MA, US Office: 978-462-2323 Mobile: 978-462-2323 nick@usedpowerboats.com</p>