



American Marine & Boat Sales  
*The Power Boat Specialists*

**NICK KATSOULIS**  
American Marine & Boat Sales  
58 R Merrimac St. 2nd floor  
Newburyport, MA, US  
Office: 978-462-2323  
Mobile: 978-462-2323  
nick@usedpowerboats.com

# 2004 Four Winns 348 Vista

Boat Type: Express Cruiser

Address: Newburyport, MA, US

Price: \$79,900



## OVERVIEW

2024 Canvas & Eyes

Both engine's have had Long Blocks Replaced

Very Clean Boat

Huge Mid-Cabin

More head room than most other like boats

Introducing the stunning 2004 Four Winns 348 Vista, a remarkable cruiser that combines elegance and performance. With an overall length of 35.58 feet, this vessel is designed for both comfort and adventure on the water. Its robust fiberglass hull features a Deep Vee shape, ensuring a smooth and stable ride even in choppy conditions. Powered by twin Volvo-Penta inboard engines, each delivering an impressive 320 horsepower, this boat is perfect for exhilarating outings. With only 290 hours of use, these engines promise reliability and efficiency for your cruising adventures. The 348 Vista is equipped with a well-appointed head, enhancing onboard convenience. The thoughtful design and features make it an ideal choice for those seeking a blend of leisure and functionality. Experience the joy of boating with "4 My Girls," where every journey becomes a cherished memory.

SPECIFICATIONS

Basic Information

Manufacturer:	Four Winns	Vessel Name:	4 My Girls
Model:	348 Vista	Boat Type:	Express Cruiser
Year:	348 Vista	Hull Material:	Fiberglass
Category:	Power	Hull Type:	Modified Vee
Condition:	Used	Hull Color:	white
Location:	Newburyport, MA, US	Designer:	
Available for sale in U.S. waters:	Yes	Flag of Registry:	

Dimensions & Weight

Length:	34 ft - 10.36 meter	Draft - max:	2 ft 11 in - 0.89 meter
LOA:	35 ft 7 in - 10.84 meter	Bridge Clearance:	9 ft 2 in - 2.8 meter
Beam:	11 ft 9 in - 3.58 meter	Dry Weight:	13000 ft - 3962.4 meter

Engine

Make:	Volvo Penta	Engine Type:	Inboard
Model:		Drive Type:	V Drive
Engine(s):	2	Fuel Type:	Gas/Petrol
Hours:	290	Horsepower:	320 (Individual), 640 (combined)
Cruise Speed:	25 MPH	Max Speed:	-
Range:	-	Joystick Control:	No

Tank Capacities

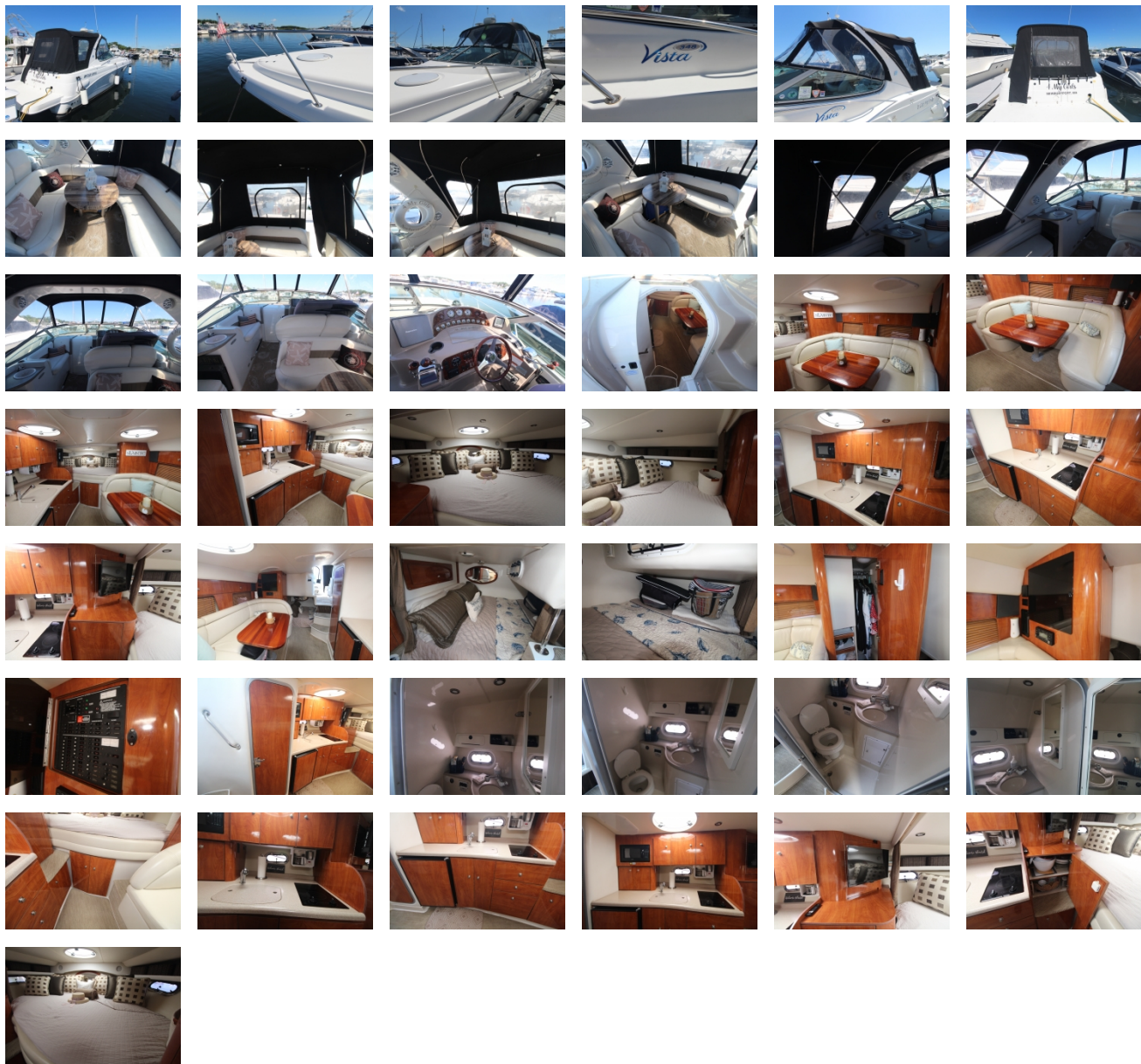
Fuel Tank:	220 gallons - 1 tank(s)	Holding Tank:	12 gallons - 1 tank(s)
Fresh Water Tank:	40 gallons - 1 tank(s)		

Accommodations

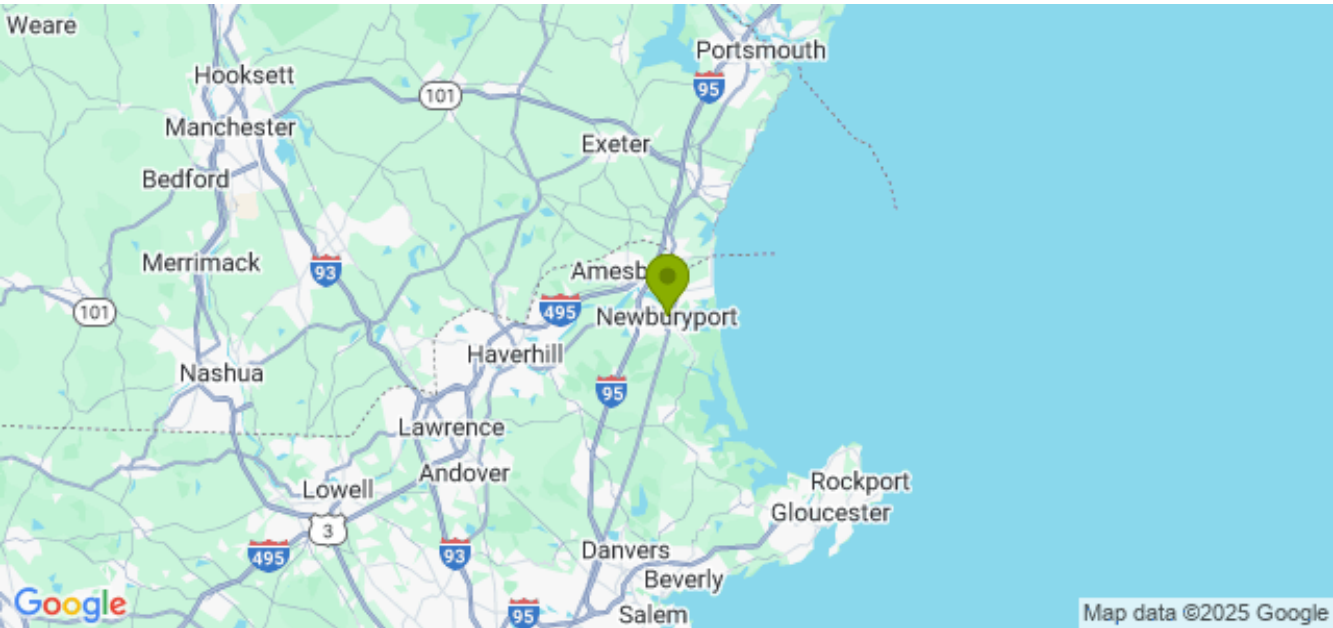
Total Cabins:	1	Crew Cabins:	-
Total Berths:	-	Crew Berths:	-
Total Sleeps:	5	Crew Sleeps:	-
Total Heads:	1	Crew Heads:	-
Captains Cabin:	-		

DESCRIPTIONS

GALLERY



LOCATION MAP





# American Marine & Boat Sales

*The Power Boat Specialists*

**NICK KATSOULIS**  
American Marine & Boat Sales  
58 R Merrimac St. 2nd floor  
Newburyport, MA, US  
Office: 978-462-2323  
Mobile: 978-462-2323  
[nick@usedpowerboats.com](mailto:nick@usedpowerboats.com)

---