



American Marine & Boat Sales  
*The Power Boat Specialists*

**NICK KATSOULIS**  
American Marine & Boat Sales  
58 R Merrimac St. 2nd floor  
Newburyport, MA, US  
Office: 978-462-2323  
Mobile: 978-462-2323  
nick@usedpowerboats.com

# 2016 Jeanneau Velasco 37F

Boat Type: Flybridge

Address: Danvers, MA, US

Price: \$309,000



## OVERVIEW

With family cruising at the heart of “Born to Run “, she has been designed to provide a pleasant, sociable and inclusive open-plan living area combined with economic cruising through conventional shaft drive.

Jeanneau have placed the galley just inside the double-opening cockpit doors, which are part of the triple-glazing panels separating the saloon from the cockpit. This layout provides more space in the saloon and creates an uninterrupted open-plan layout from the cockpit seating through to the dining table and interior L-shaped seating around the table, which faces aft so everyone is facing each other and part of the party. The galley placement makes it easy to serve guests, both inside and outside.

The overnight aspects are taken care of with a forward main double cabin and a second guest or children's cabin with two singles under the helm. There is full standing headroom for getting dressed within the cabin confines at the foot of the berths in both cabins. The master cabin has a wealth of stowage and room for personal items each side of the raised berth. By carrying the beam above the waterline well forward there is a platform for a full double, not a tapered one.

The guest cabin is as light as the main cabin thanks window's introduced on the side of the hull. There is a shared access to the shower and heads compartment at the foot of the companionway, but no direct access from the main cabin. Instead, the shower cubicle has been given its own privacy, so that two people can use the facilities at the same time, the heads and basin being separate, outside the shower.

A generous sunbathing area is provided on the extensive foredeck, with a wide, flat area thanks to that increased forward beam on deck. Deck cushions can be raised into a reclined position for reading, which makes them even more desirable and versatile. While those wanting to take to the water can do so via the expansive swim platform close to the waterline with its built-in ladder. The flybridge seating is as versatile as that below, with a forward-facing stretch lounger next to the helm created by using an infill. Access to the flybridge is via a wide, teak-stepped ladder with good handrails that make it easy to ascend or descend, even at sea.

The main helm is well laid out with a double, fixed seat with a folding edge to allow a higher seating position.. It is the bench-style helm seating that provides the headroom for the guest cabin .The immediate access to the side deck from the wheel through the sliding side door is a useful feature. Also having bow and stern thrusters makes docking much easier .

“Born to Run “ offers the growing family separate cabins with good space in both, roomy socializing areas and catering facilities to create a home from home. With the excellent fuel range .

Here's a summary of the key features

- Three Flat-screen smart TVs. Three separate radio systems. Two with Pioneer Touch screen controls.
- 7.5kw Cummins Onan genset 1400 hours
- three zones AC/Heat
- 5-person dinghy w/Drive station and 25hp Yamaha 4 stroke low hrs.
- Fully remote hydraulic Dinghy Davit system for launching your water taxi with ease..
- Boat remote control, dock, and drive remotely for those challenging spots.

### Interior:

- **Open-plan living:** Spacious and sociable living area with a seamless flow from cockpit to saloon.
- **Galley location:** Conveniently placed within the cockpit area for easy serving.
- **Sleeping arrangements:**
  - Master cabin with a double berth and ample storage.
  - Guest cabin with twin berths.
  - Children's cabin with twin berths.
  - All cabins with good headroom and storage.
- **Headroom:** Full standing headroom in all cabins.
- **Shared bathroom:** Separate shower cubicle for privacy.

### Exterior:

- **Spacious cockpit:** Comfortable seating and easy access to the galley.
- **Large foredeck:** Generous sunbathing area with reclining deck cushions.
- **Swim platform:** Easy water access with a built-in ladder.
- **Flybridge:** Versatile seating with a forward-facing lounger.
- **Easy access:** Wide and safe access to the flybridge.

### Other features:

- **Conventional shaft drive:** For efficient and economical cruising.
- **Twin engines:** Enhanced maneuverability with bow and stern thrusters.
- **Excellent fuel range:** Suitable for extended cruising.

SPECIFICATIONS

Basic Information

Manufacturer:	Jeanneau	Vessel Name:	Born to Run
Model:	Velasco 37F	Boat Type:	Flybridge
Year:	Velasco 37F	Hull Material:	Fiberglass
Category:	Power	Hull Type:	
Condition:	Used	Hull Color:	white
Location:	Danvers, MA, US	Designer:	
Available for sale in U.S. waters:	Yes	Flag of Registry:	

Dimensions & Weight

Length:	37 ft - 11.28 meter	Draft - max:	2 ft 9 in - 0.84 meter
LOA:	37 ft 5 in - 11.41 meter	Bridge Clearance:	-
Beam:	12 ft 7 in - 3.83 meter	Dry Weight:	18234 ft - 5557.72 meter

Engine

Make:	Volvo Penta	Engine Type:	Inboard
Model:	D4	Drive Type:	Direct Drive
Engine(s):	2	Fuel Type:	Diesel
Hours:	770	Horsepower:	300 (Individual), 600 (combined)
Cruise Speed:	23 MPH	Max Speed:	-
Range:	-	Joystick Control:	No

Tank Capacities

Fuel Tank:	212 gallons - 1 tank(s)	Holding Tank:	23 gallons - 1 tank(s)
Fresh Water Tank:	87 gallons - 1 tank(s)		

Accommodations

Total Cabins:	2	Crew Cabins:	-
Total Berths:	-	Crew Berths:	-
Total Sleeps:	6	Crew Sleeps:	-
Total Heads:	1	Crew Heads:	-
Captains Cabin:	-		

## DESCRIPTIONS

- Raymarine 260 VHF radios at lower and upper stations
- Raymarine E95s Hybrid Touch GPS Chart/Depth upper station
- Raymarine E127 Hybrid Touch GPS Chart/Depth lower station
- Raymarine radar
- Raymarine autopilot at lower station
- Pioneer AM/FM stereo with multi speaker systems master and salon
- Jensen AM/FM stereo in guest room
- Samsung Flat screen TV Salon, Master stateroom and guest state room.
- Bow thruster/Stern thruster.
- Marinco Inverter
- Glendenning auto retract Cable Master
- Multiple zone reverse cycle heat and air conditioning.
- Underwater transom lights (three)
- Trim tabs
- Quick Windlass with 35# Lewmar anchor and rode
- Windshield wipers/washers
- Spot light with remote
- Capelli 11 RIB with full canvas cover , 5 passenger
- 25 hp Yamaha four stroke outboard motor
- Bimini, Bridge seating and console covers, seating covers, cockpit seating and covers.
- Glendenning shore cord retract
- Spreader/Deck lights.
- Yacht Controller joy stick with remote
- Articulated hydraulic dinghy lift , Custom Built Presto SL 500 with Remote
- Swim Platform
- 2000 watt inverter
- Custom made Master Bedroom Mattress with Custom made foam pad plus gel pad 3k Value
- S/Steel Gas grill with cover and Stand
- New bottom paint 2024 , 5 year paint
- Cutlass bearings and shaft seals replaced 2023
- Full kitchen accessories are included with boat
- Dock Mate remote control system ( worn around your neck ) Dock anywhere on the boat . 12k Value

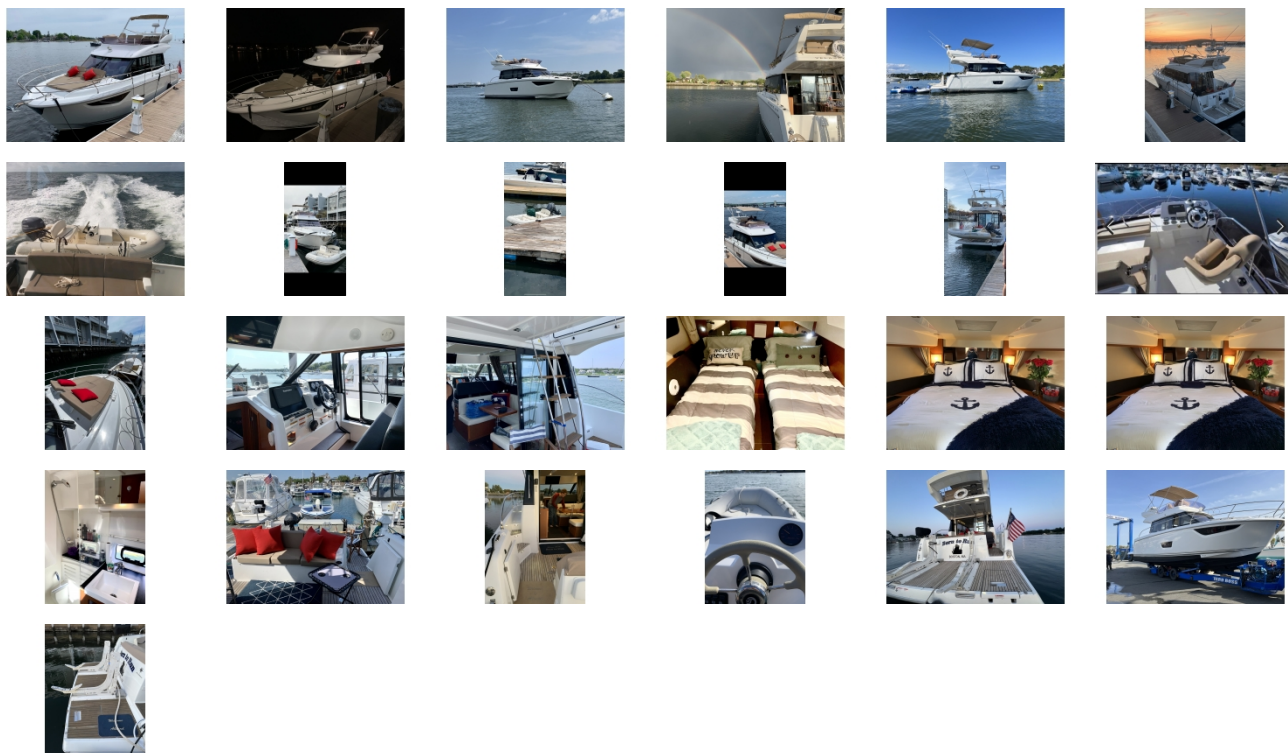
Although slightly more compact, reinforcing a sense of intimacy and well-being, the new VELASCO 37 F is just as elegant as the VELASCO 43 F. Inside, every detail has been designed to increase window area, for a bright living space with magnificent 360° views.

A side door, recessed side decks, an open cockpit sheltered by the flybridge, double doors and a large platform... nothing beats open-air living. True to the original concept, the flybridge offers three incomparable living spaces. Sundecks and a spacious swim platform enhance comfort on deck.

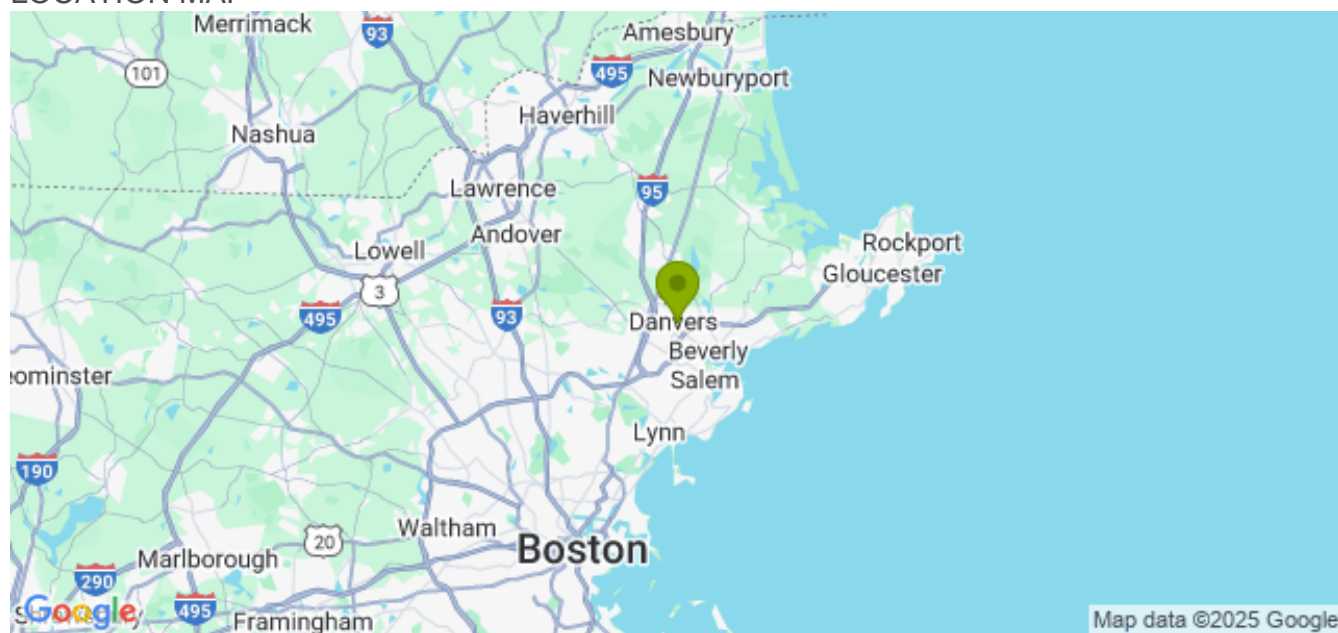
Down below, the VELASCO 37 F has a very spacious owner's cabin and an attractively proportioned double cabin. The head compartment includes a separate shower stall (WC outside the shower). She features all the hallmarks of a quality JEANNEAU interior.

With her twin engines with shaft drive and thrusters, the VELASCO 37 F redefines the modern power cruiser... dedicated to family fun on the water.

## GALLERY



## LOCATION MAP



American Marine & Boat Sales  
*The Power Boat Specialists*

**NICK KATSOULIS**  
**American Marine & Boat Sales**  
 58 R Merrimac St. 2nd floor  
 Newburyport, MA, US  
 Office: 978-462-2323  
 Mobile: 978-462-2323  
 nick@usedpowerboats.com