



American Marine & Boat Sales  
*The Power Boat Specialists*

**NICK KATSOULIS**  
American Marine & Boat Sales  
58 R Merrimac St. 2nd floor  
Newburyport, MA, US  
Office: 978-462-2323  
Mobile: 978-462-2323  
nick@usedpowerboats.com

# 2006 Legacy Express

Boat Type: Express Cruiser

Address: Boston, MA, US

Price: \$299,900





## OVERVIEW

New to market and maintained with open check book! This 42' Legacy Yachts with single Cummins 660 hp has had many recent upgrades/updates:

Slip at Constituion Marina in Boston included for the 2025 Season !!

The 42' Legacy Yachts boasts proven performance and timeless design coupled with luxurious comfort and stability. She has many very recent updates, and service including:

Light Grey Awl Grip, Interior Brite Work Refinished, new Garmin Electronics, new Stainless-Steel Rudder Shoe, new Dripless Shaft Seal, new Stern Thruster, new Windlass, new Batteries, and new Cummins top end, turbo, and recent after cooler service. All service records available and serviced by certified Cummins Tech

### Electronics:

Garmin 8612 XSV Chart Plotter and bottom sounder (2019)

Garmin GMI 20 Instrument Display (2019)

Furuno NavNet open array radar

Simrad Autopilot

Flir Night Vision

ICOM VHF radio

AIS transceiver

Magnetic Compass

TV w/Trac Vision

### Galley:

12V/110V Refrigerator/Freezer

Stainless Steel Double Sink

Microwave Oven

2-burner Electric Stove

Seaward 11-gallon Water Heater

Cold & hot, pressure, dockside Fresh Water System

Jabsco Quiet Flush Head

Teak & Holly Soles

Flow Jet Fresh Water Pump

Tank Watch

### Accommodations:

Master Stateroom Queen Centerline Berth

Guest Cabin Settee Converts to Full Size Birth

Main Salon Single Birth

### Electrical:

110V / 30AMP 220V /50AMP AC Electrical System

12V DC Electrical System

Northern Lights Generator with low hours

Dockside Electrical Cables

Inverter/Outback/Charger 2000 watts & 80 amps charging Power System

### Deck:

Teak Covering Boards

Rocna SS Plow Anchor with 5/16 G4 chain

Bow Pulpit

Navigation Lights

Deck Wash Down System

Cold & hot, pressure, dockside Fresh Water System

Roof mounted forward facing LED Flood Light

Revere 4 Person Life Raft recent USCG/SOLAS certification

Swim Platform

Swim ladder

Transom Door

Electric Windlass (Helm and Foot Controls- (new motor, gearbox, solenoid 2020)

Windshield Washer/wipers

(1) Stidd Helm Seat

Sliding Side Doors (starboard and aft)

Stainless Steel Rudder Shoe (replaced 2023)

Windshield Cover

Dual Trumpet Horns

Steps on Windshield (deck to hardtop)

Bright-work, Wash & Wax continually maintained (Bright-work refinished 2023)

### Engine Room:

Low Hour Cummins QSM-11 660 hp Diesel

Head and Turbo replaced with new OEM Cummins in 2023

After cooler service 2023

Northern Lights Generator with low hours

(2) Reverse Cycle Air Conditioners and Heat

Bilge Blower

(3) Automatic & Manual Bilge Pumps with high water alarms

Bow & Stern Thrusters (Stern thruster replaced 2022)

Reverso Oil Change System

Fireboy Fire Extinguishing System

Fresh Water Cooling System

Racor Fuel Filters (Mains are Double)

4-Blade Propeller

Trim Tabs

Hydraulic Steering

Engine Room Lights

Electronic Engine Controls

Sea Water Strainers

SPECIFICATIONS

Basic Information

Manufacturer:	Legacy	Vessel Name:	Blue Sora
Model:	Express	Boat Type:	Express Cruiser
Year:	Express	Hull Material:	Fiberglass
Category:	Power	Hull Type:	
Condition:	Used	Hull Color:	Blue
Location:	Boston, MA, US	Designer:	
Available for sale in U.S. waters:	Yes	Flag of Registry:	

Dimensions & Weight

Length:	42 ft - 12.8 meter	Draft - max:	3 ft - 0.91 meter
LOA:	-	Bridge Clearance:	-
Beam:	13 ft 7 in - 4.14 meter	Dry Weight:	26200 ft - 7985.76 meter

Engine

Make:	Cummins	Engine Type:	Inboard
Model:	QSM-11	Drive Type:	
Engine(s):	1	Fuel Type:	Diesel
Hours:	1850	Horsepower:	660 (Individual), 660 (combined)
Cruise Speed:	19 MPH	Max Speed:	-
Range:	-	Joystick Control:	No

Tank Capacities

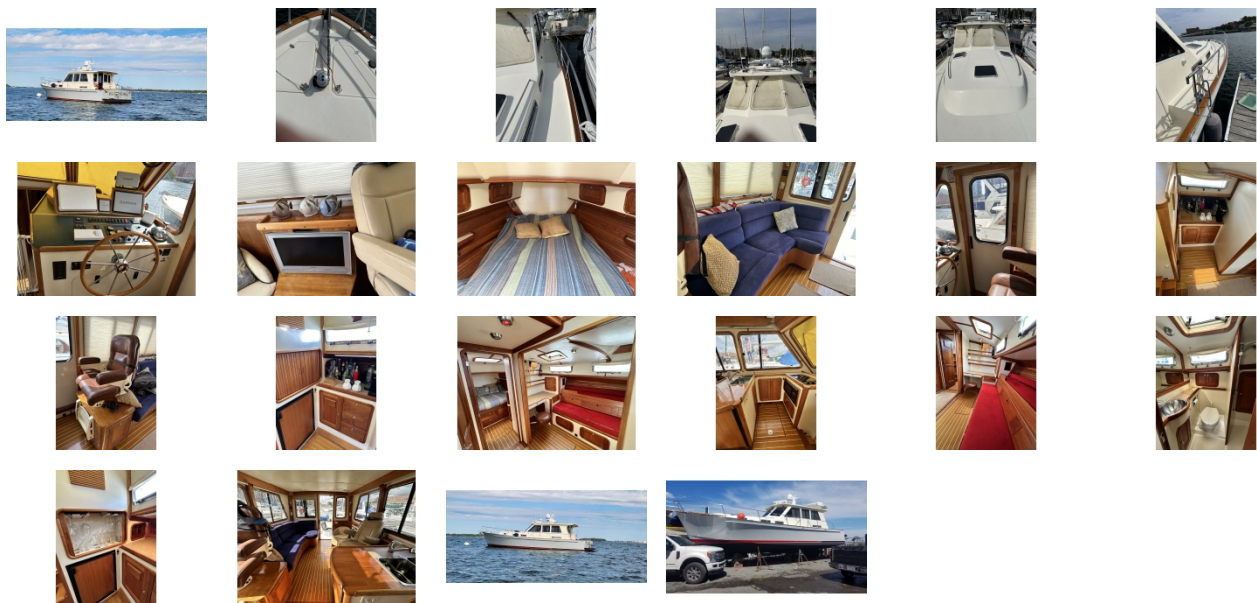
Fuel Tank:	450 gallons - 1 tank(s)	Holding Tank:	35 gallons - 1 tank(s)
Fresh Water Tank:	110 gallons - 1 tank(s)		

Accommodations

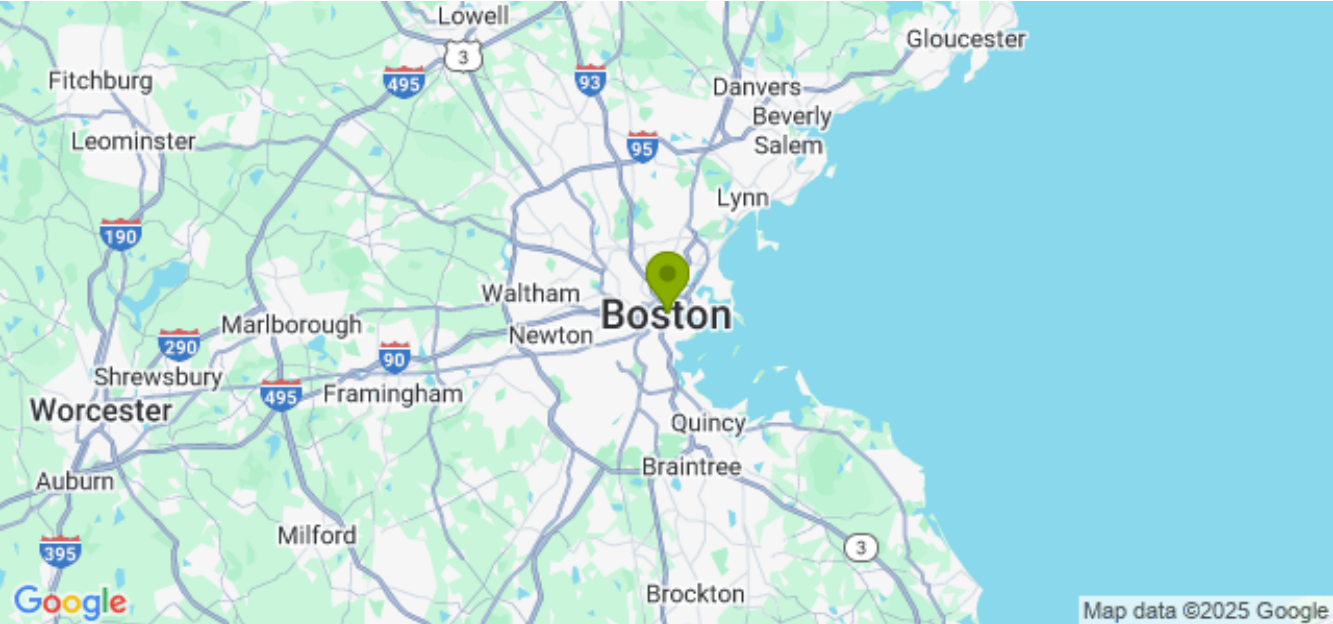
Total Cabins:	-	Crew Cabins:	-
Total Berths:	-	Crew Berths:	-
Total Sleeps:	-	Crew Sleeps:	-
Total Heads:	1	Crew Heads:	-
Captains Cabin:	-		

DESCRIPTIONS

GALLERY



LOCATION MAP



**NICK KATSOUKIS**  
American Marine & Boat Sales  
58 R Merrimac St. 2nd floor  
Newburyport, MA, US  
Office: 978-462-2323  
Mobile: 978-462-2323  
nick@usedpowerboats.com