



American Marine & Boat Sales
The Power Boat Specialists

NICK KATSOULIS
American Marine & Boat Sales
58 R Merrimac St. 2nd floor
Newburyport, MA, US
Office: 978-462-2323
Mobile: 978-462-2323
nick@usedpowerboats.com

2007 Boston Whaler 305 Conquest

Boat Type: Express Cruiser

Address: Danvers, MA, US

Price: \$119,995



OVERVIEW

The 305 Conquest is a heavily built 30 foot express designed for serious anglers. Her list of fishing features begins with plenty of rod storage, and includes a 24 gallon transom livewell, cockpit rigging station, two insulated in-deck fishing boxes with pump-outs, and an enormous hatch in the sole that provides unprecedented access to the bilge. The visibility from the 305's raised bridge deck is excellent, and a comfortable lounge across from the helm seats two guests. Below, the Conquest sleeps 4 adults comfortably - two in the V-berth and two more in the midcabin double berth. Additional features include a bow pulpit, wide side decks, and a hideaway bench that pulls out from the transom.

Twin Supercharged Verado's !! 500 Hrs

2 Newer Lower Units , 2021 & 2023

LOADED with amenities, she is one of the best fishing boats around, and doubles as a fantastic weekend getaway.

Amenities Include:

- **Heat/AC**
- **Refrigerator**
- **Stove**
- **Dinette**
- **Macerator**
- **Clarion Stereo/CD System**
- **Raydome Radar**
- **Raymarine GPS**
- **Raymarine VHF**
- **Raymarine Chart Plotter/Depth Finder/Fish Finder**
- **Compass**
- **New Gen-Set in 2017 (gas) Very Low Hours**
- **Newer Canvas 2017**
- **Windlass**
- **3 Batteries**
- **Halon Fire System**

SPECIFICATIONS

Basic Information

Manufacturer:	Boston Whaler	Vessel Name:	Miner Distraction
Model:	305 Conquest	Boat Type:	Express Cruiser
Year:	305 Conquest	Hull Material:	Fiberglass
Category:	Power	Hull Type:	Deep Vee
Condition:	Used	Hull Color:	white
Location:	Danvers, MA, US	Designer:	
Available for sale in U.S. waters:	Yes	Flag of Registry:	

Dimensions & Weight

Length:	30 ft - 9.14 meter	Draft - max:	1 ft 8 in - 0.51 meter
LOA:	32 ft 1 in - 9.78 meter	Bridge Clearance:	-
Beam:	10 ft 7 in - 3.22 meter	Dry Weight:	8500 ft - 2590.8 meter

Engine

Make:	Mercury Verado	Engine Type:	Outboard
Model:	Verado	Drive Type:	
Engine(s):	2	Fuel Type:	Gas/Petrol
Hours:	525	Horsepower:	250 (Individual), 500 (combined)
Cruise Speed:	30 MPH	Max Speed:	38 MPH
Range:	-	Joystick Control:	No

Tank Capacities

Fuel Tank:	300 gallons - 1 tank(s)	Holding Tank:	10 gallons - 1 tank(s)
Fresh Water Tank:	30 gallons - 1 tank(s)		

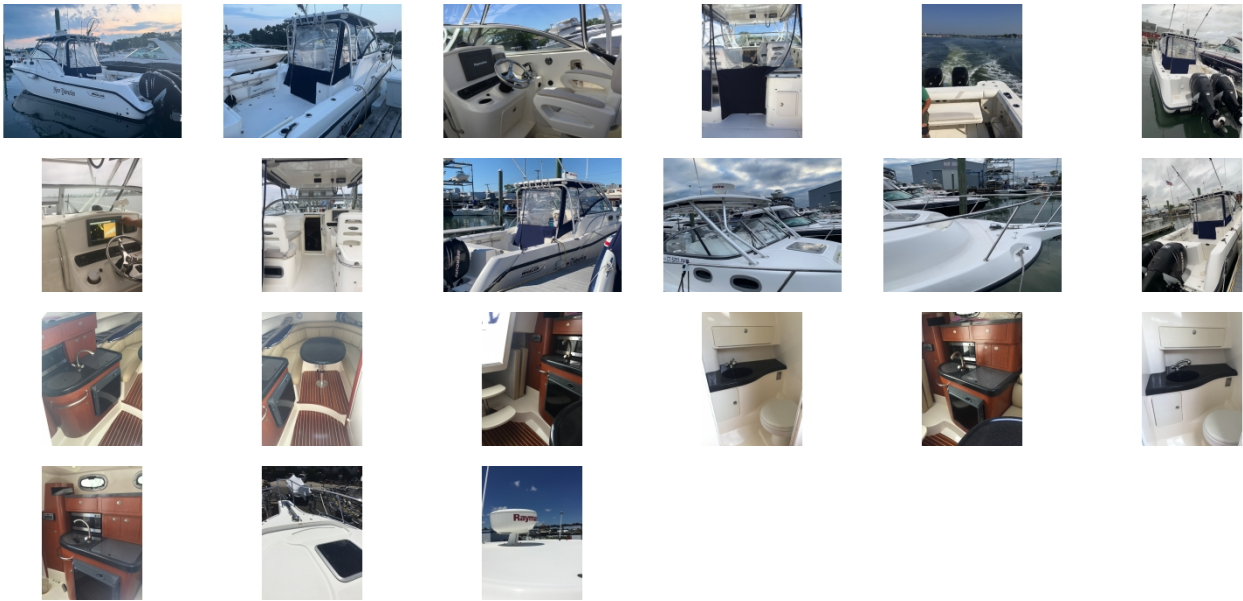
Accommodations

Total Cabins:	1	Crew Cabins:	-
Total Berths:	-	Crew Berths:	-
Total Sleeps:	4	Crew Sleeps:	-
Total Heads:	1	Crew Heads:	-
Captains Cabin:	-		

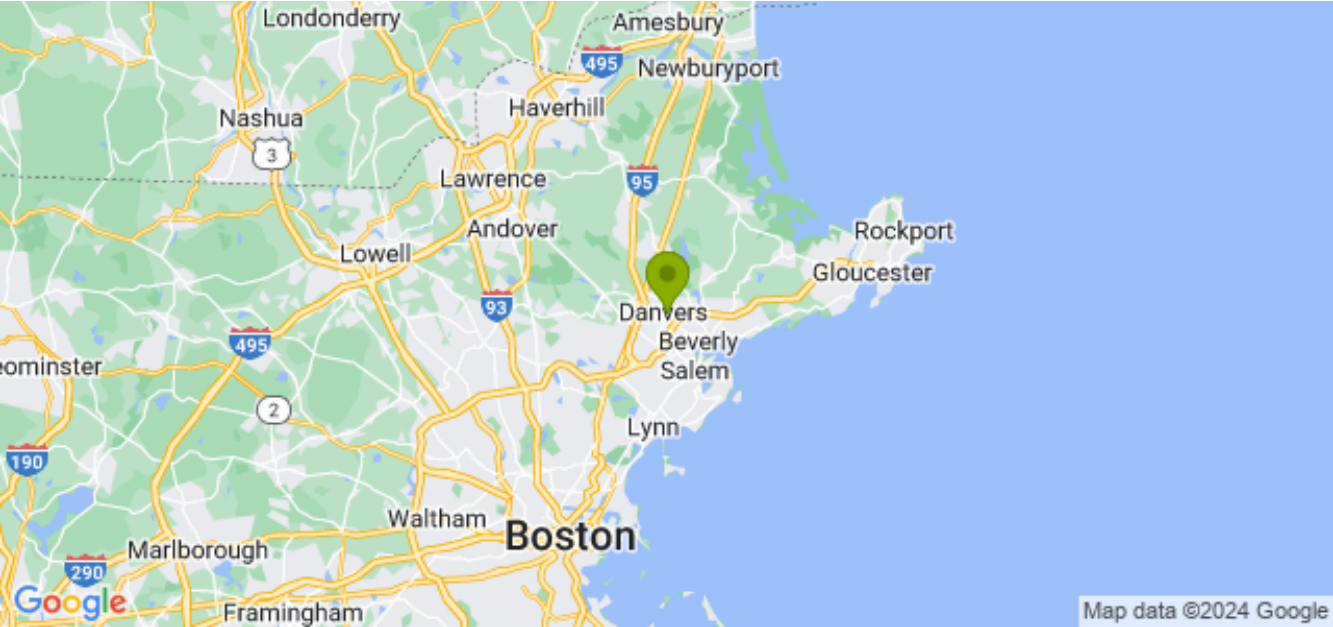
DESCRIPTIONS

The Boston Whaler 305 Conquest boasts an impressive 58 square feet of cockpit space – perfect for fish fighting or entertaining or both. The 305 Conquest's hull design combines quick planing capabilities with a smooth, dry ride. Its helm deck area is elevated for superior visibility fore and aft, with a portside settee for lounging while leisurely watching the lines. The fully adjustable helm seat features a flip-up seat cushion that converts it to a bolster seat for operation while standing. The recessed bow walkaround provides more secure-feeling access to the anchor locker and bow area. The cabin interior is warm and inviting, thanks to rich accoutrements including cherry cabinetry, granite-colored countertops and decorator vinyls and accents.

GALLERY



LOCATION MAP





American Marine & Boat Sales

The Power Boat Specialists

NICK KATSOULIS
American Marine & Boat Sales
58 R Merrimac St. 2nd floor
Newburyport, MA, US
Office: 978-462-2323
Mobile: 978-462-2323
nick@usedpowerboats.com