



American Marine & Boat Sales  
*The Power Boat Specialists*

**NICK KATSOULIS**  
American Marine & Boat Sales  
58 R Merrimac St. 2nd floor  
Newburyport, MA, US  
Office: 978-462-2323  
Mobile: 978-462-2323  
nick@usedpowerboats.com

# 2011 Sea Ray 390 Sundancer

Boat Type: Cruiser

Address: Boston, MA, US

Price: \$225,000



## OVERVIEW

The 390 Sundancer rides on a deep-V hull and a solid fiberglass bottom. While Sundancers are generally known for their cutting-edge styling—note the vertical hull ports and seamless hardtop with aft sunshade—the lush accommodations of the 390 Sundancer is a match for the best European Sport Yachts her size. With 6'7" of cabin headroom, a huge mid-stateroom, and a private bow stateroom with flat-screen TV, the interior has the look and feel of a small motor yacht. The Sundancer's wide-open cockpit with centerline walk-through provides facing lounge seating for a small crowd. The swivel helm seat with flip-up bolster is a nice touch. A transom storage locker, power engine room hatch, foredeck sun pads, underwater exhausts, and anchor washdown system were standard. Mer-Cruiser 420hp gas inboards cruise at 24 knots. Invictus has a complete re-man engine , 25 hrs Also both engine's have a complete new exhaust systems Vessel is in excellent condition ! Vessel has Axis Joystick for easy docking

## SPECIFICATIONS

### Basic Information

Manufacturer:	Sea Ray	Vessel Name:	
Model:	390 Sundancer	Boat Type:	Cruiser
Year:	390 Sundancer	Hull Material:	Fiberglass
Category:	Power	Hull Type:	Deep Vee
Condition:	Used	Hull Color:	white
Location:	Boston, MA, US	Designer:	
Available for sale in U.S. waters:	Yes	Flag of Registry:	

### Dimensions & Weight

Length:	39 ft - 11.89 meter	Draft - max:	3 ft 1 in - 0.94 meter
LOA:	-	Bridge Clearance:	12 ft 1 in - 3.68 meter
Beam:	12 ft 6 in - 3.81 meter	Dry Weight:	19400 ft - 5913.12 meter

### Engine

Make:	MerCruiser	Engine Type:	Inboard / Outboard
Model:	8.2	Drive Type:	
Engine(s):	2	Fuel Type:	Gas/Petrol
Hours:	330	Horsepower:	420 (Individual), 840 (combined)
Cruise Speed:	-	Max Speed:	-
Range:	-	Joystick Control:	Yes

### Tank Capacities

Fuel Tank:	250 gallons - 1 tank(s)	Holding Tank:	35 gallons - 1 tank(s)
Fresh Water Tank:	55 gallons - 1 tank(s)		

### Accommodations

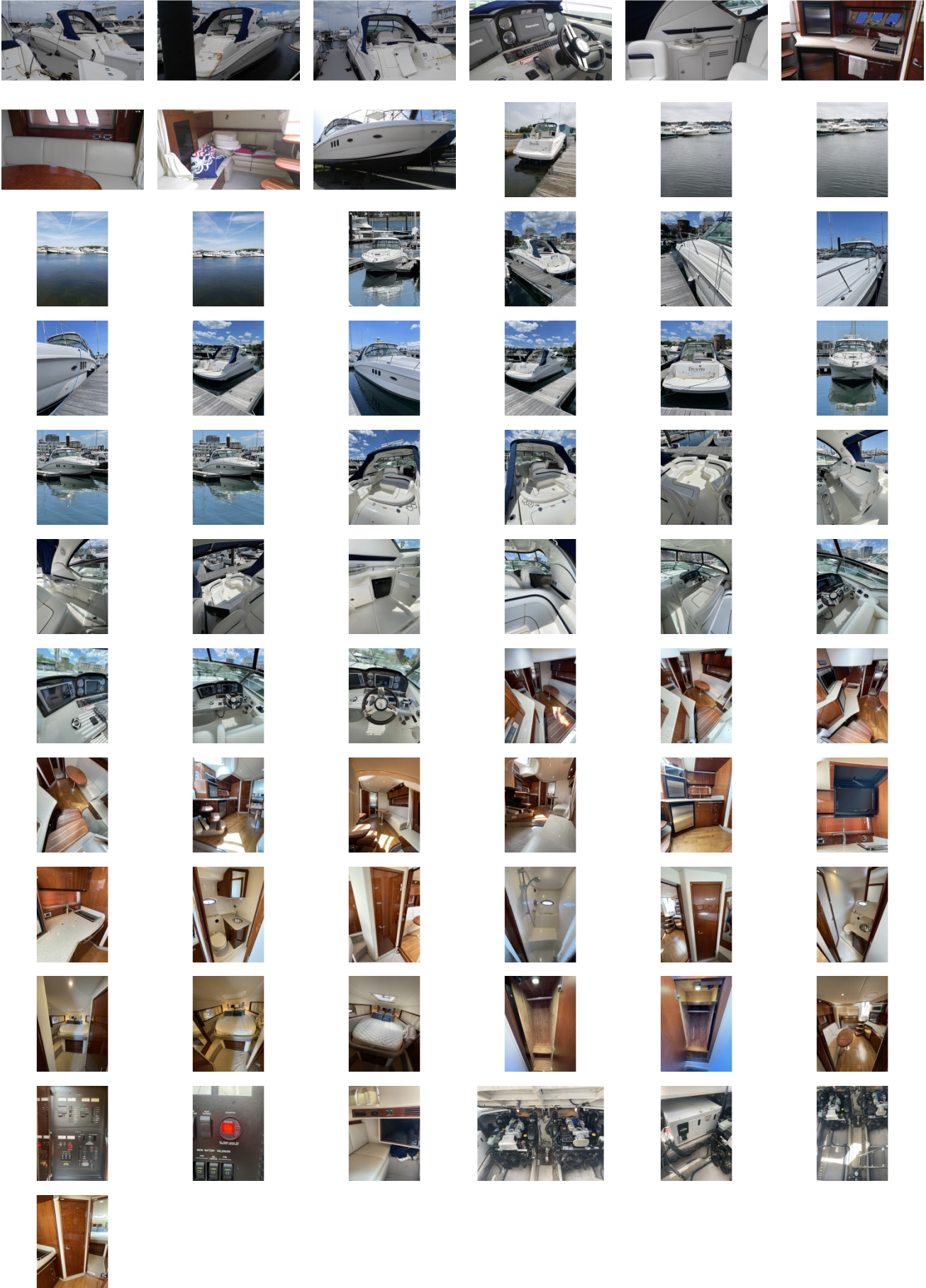
Total Cabins:	-	Crew Cabins:	-
Total Berths:	-	Crew Berths:	-
Total Sleeps:	6	Crew Sleeps:	-
Total Heads:	1	Crew Heads:	-
Captains Cabin:	-		

## DESCRIPTIONS

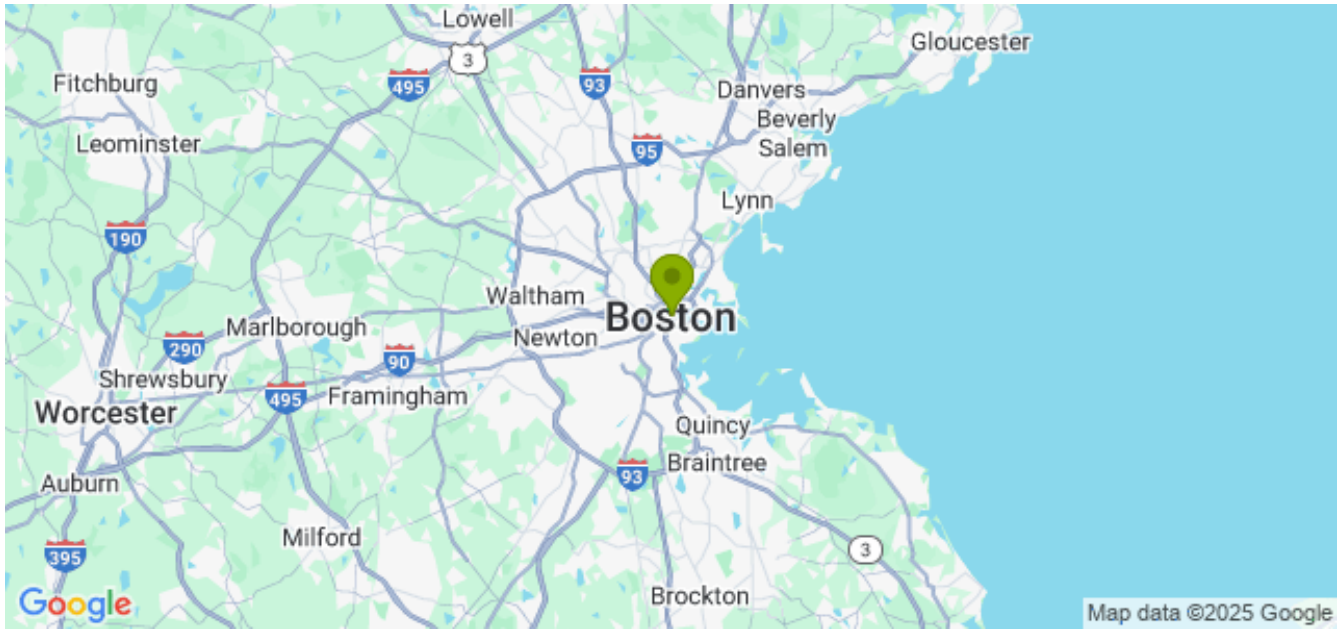
### ADDITIONAL FEATURES & EQUIPMENT

**Air Conditioning**  
**Heat - 2 zones**  
**Central Vacuum**  
**Head**  
**Shower Stall**  
**Dinette Conversion**  
**Sofa Bed**  
**Swim platform**  
**Ladder**  
**Transom Shower**  
**Microwave**  
**Refrigerator**  
**Electric Stove**  
**Freezer**  
**Sony Stereo**  
**Sony Flat Screen TV**  
**Radio**  
**CD**  
**Bimini Top**  
**Radar Arch**  
**Radar**  
**GPS**  
**VHF**  
**Compass**  
**Chart Potter**  
**Depth Finder**  
**Auto Pilot**  
**Generator**  
**Windlass**  
**Remote Spot Light**  
**Dock Locker**  
**Halon Fire System**  
**Joy Stick**

# GALLERY



## LOCATION MAP



**American Marine & Boat Sales**  
*The Power Boat Specialists*

**NICK KATSOULIS**  
American Marine & Boat Sales  
58 R Merrimac St. 2nd floor  
Newburyport, MA, US  
Office: 978-462-2323  
Mobile: 978-462-2323  
nick@usedpowerboats.com