



American Marine & Boat Sales  
*The Power Boat Specialists*

**NICK KATSOU LIS**  
American Marine & Boat Sales  
58 R Merrimac St. 2nd floor  
Newburyport, MA, US  
Office: 978-462-2323  
Mobile: 978-462-2323  
nick@usedpowerboats.com

# 2002 Carolina Classic 28 Express

Boat Type: Sport Fishing

Address: North Shore, MA, US

Price: \$69,000



## OVERVIEW

"**Seminole**" is a highly regarded fisherman with clean lines, a deep-V hull, and a wide beam that allows for a very roomy cockpit. There is a complete cabin below with a big V-berth, standup head with shower, a compact galley, air-conditioning and teak-framed cabinetry. The engines are very accessible - the entire bridge deck can be raised on a pair of hydraulic rams at the push of a button. The cockpit has plenty of room for a mounted chair and includes a pair of in-deck fish boxes, rod holders, a transom live well, tackle center with sink, and fresh and saltwater washdowns. Additional features include side-dumping exhausts, wide side decks, high gunwales, and a well-arranged helm with room for flush-mounted electronics.

**See Full spec's for details**

## SPECIFICATIONS

### Basic Information

Manufacturer:	Carolina Classic	Vessel Name:	Seminole
Model:	28 Exprerss	Boat Type:	Sport Fishing
Year:	28 Exprerss	Hull Material:	Fiberglass
Category:	Power	Hull Type:	Deep Vee
Condition:	Used	Hull Color:	white
Location:	North Shore, MA, US	Designer:	
Available for sale in U.S. waters:	Yes	Flag of Registry:	

### Dimensions & Weight

Length:	28 ft - 8.53 meter	Draft - max:	2 ft 6 in - 0.76 meter
LOA:	28 ft 5 in - 8.66 meter	Bridge Clearance:	-
Beam:	10 ft 6 in - 3.2 meter	Dry Weight:	15000 ft - 4572 meter

### Engine

Make:	Volvo Penta	Engine Type:	Inboard
Model:	KAMD 43P	Drive Type:	
Engine(s):	2	Fuel Type:	Diesel
Hours:	1016	Horsepower:	230 (Individual), 460 (combined)
Cruise Speed:	26 MPH	Max Speed:	29 MPH
Range:	-	Joystick Control:	No

### Tank Capacities

Fuel Tank:	250 gallons - 1 tank(s)	Holding Tank:	-
Fresh Water Tank:	30 gallons - 1 tank(s)		

### Accommodations

Total Cabins:	-	Crew Cabins:	-
Total Berths:	-	Crew Berths:	-
Total Sleeps:	2	Crew Sleeps:	-
Total Heads:	1	Crew Heads:	-
Captains Cabin:	-		

DESCRIPTIONS

**Air Conditioning and Heat**

**Microwave**

**Head/Shower Combo**

**Macerator**

**Refrigerator**

**Sink**

**Dinette**

**Stereo, TV, Radio**

**Full Enclosure**

**New Canvas - 2019 Excellent condition**

**Garmin Radar**

**Garmin GPS**

**VHF**

**Ritchie Compass**

**Furuno Depth Finder**

**Flir Night Vision**

**R199 Transducer**

**Shorepower Cord**

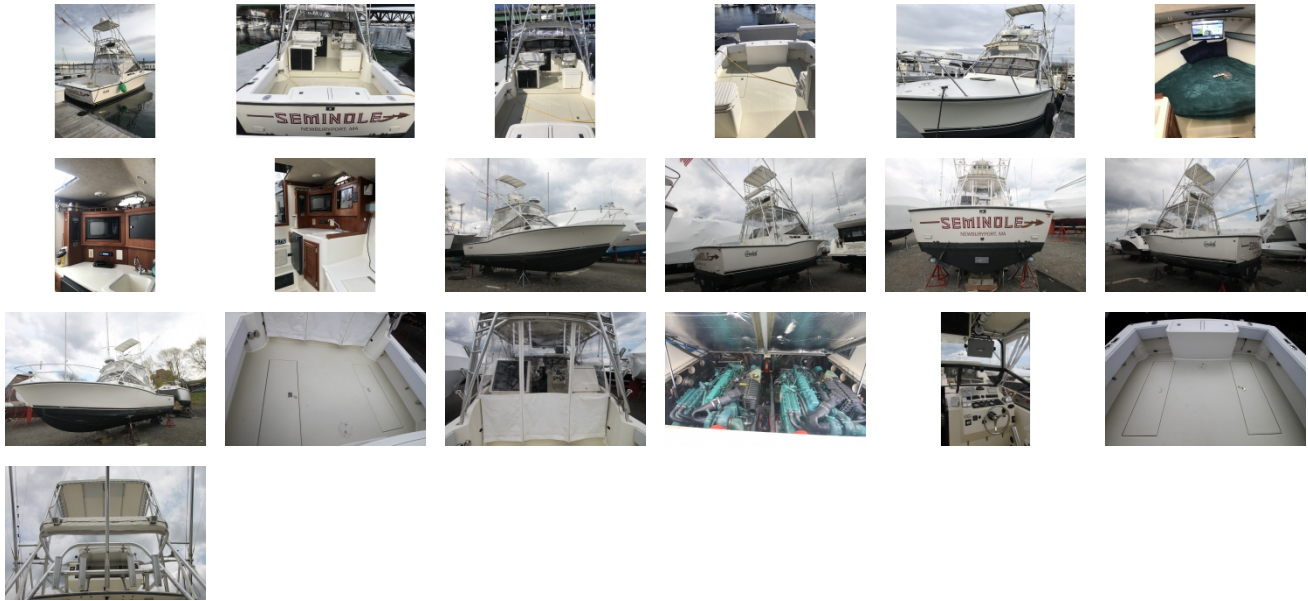
**4 Batteries 2019**

**Simrad Auto Pilot**

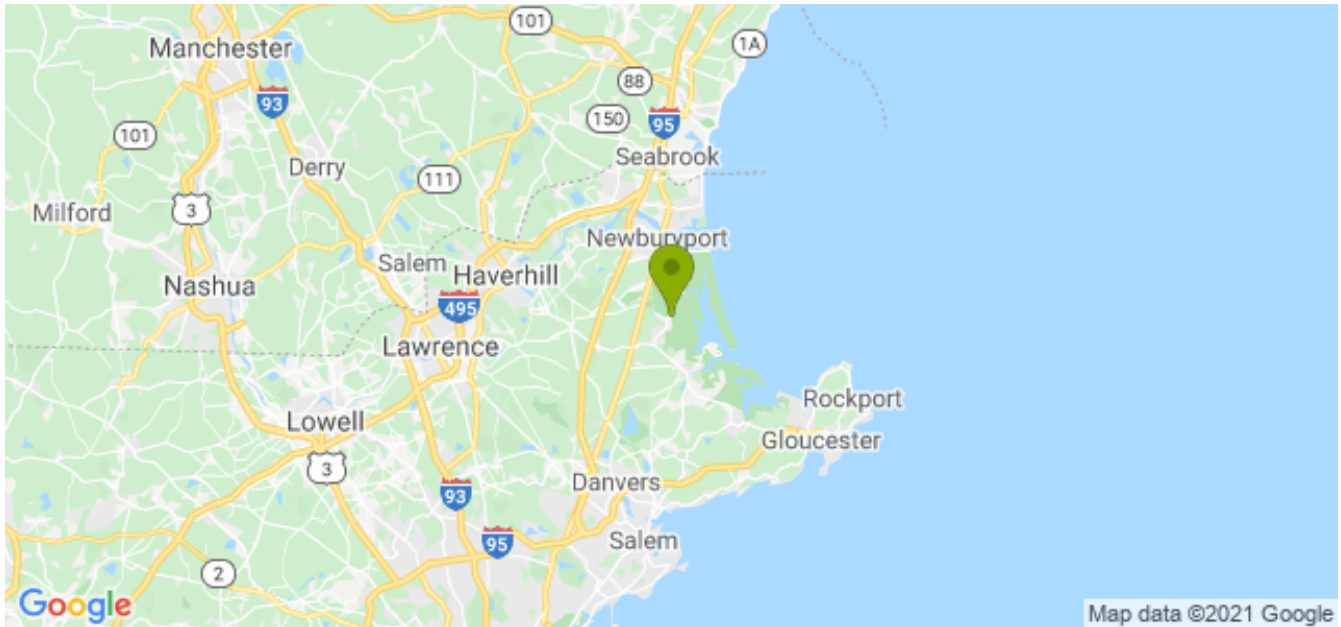
**Remote Spot Light**

**Service records available**

## GALLERY



## LOCATION MAP



**American Marine & Boat Sales**  
*The Power Boat Specialists*

**NICK KATSOU LIS**  
American Marine & Boat Sales  
58 R Merrimac St. 2nd floor  
Newburyport, MA, US  
Office: 978-462-2323  
Mobile: 978-462-2323  
nick@usedpowerboats.com