



American Marine & Boat Sales  
*The Power Boat Specialists*

**NICK KATSOULIS**  
American Marine & Boat Sales  
58 R Merrimac St. 2nd floor  
Newburyport, MA, US  
Office: 978-462-2323  
Mobile: 978-462-2323  
nick@usedpowerboats.com

# 2015 Cobia 344 CC

Boat Type: Center Console

Address: Newburyport, MA, US

Price: \$169,000



## OVERVIEW

### Owner wants sold bring offers

Options

Outriggers

Flexiteek Flooring

Joystick Control with Auto Pilot

Hardtop with Frame and Windshield

Additional Features:

Windlass

Electric Powered Bow Table/Sun Pad

Dual Simrad Units at the Helm

Lenco Trim Tabs W/ Indicators

Simrad VHF Radio

Fusion Stereo System

LED Lighting Package

Simrad Open Array Radar

Optimus Joystick Docking

Stbd. Side Dive Door

Two Oversized Aft Livewells

Retractable Aft Seating

Vaccum Flush Head W/ Holding Tank

**Powered with twin 350 Yamahas with Optimus 360 Joy Stick control! Twin 16" flush mount Simrad screens with HD radar, plotter and sounder with common control center, auto pilot, VHF Radio, Fusion sound system, Yamaha Command center, Side dive door, enclosed head with electric head, shower, vanity and double berth, Fwd table with V seating and storage, Fold down aft seat, dual helm bolster seats, electric windshield vent, thru-hull Auto anchor windlass, bait rigging station with tackle center, fresh water wash down, dual 42 gal. transom live wells, Rupp Revolution Outriggers, 2 Fwd coolers and storage, battery charger and more!! ABSOLUTELY IMMACULATE!!**

## SPECIFICATIONS

### Basic Information

Manufacturer:	Cobia	Vessel Name:	First Born IV
Model:	344 CC	Boat Type:	Center Console
Year:	344 CC	Hull Material:	Fiberglass
Category:	Power	Hull Type:	Deep Vee
Condition:	Used	Hull Color:	Wheat
Location:	Newburyport, MA, US	Designer:	
Available for sale in U.S. waters:	Yes	Flag of Registry:	

### Dimensions & Weight

Length:	34 ft - 10.36 meter	Draft - max:	-
LOA:	34 ft 4 in - 10.46 meter	Bridge Clearance:	-
Beam:	11 ft 2 in - 3.4 meter	Dry Weight:	8600 ft - 2621.28 meter

## Engine

Make:	Yamaha	Engine Type:	Outboard
Model:	350	Drive Type:	
Engine(s):	2	Fuel Type:	Gas/Petrol
Hours:	2100	Horsepower:	350 (Individual), 700 (combined)
Cruise Speed:	40 MPH	Max Speed:	58 MPH
Range:	-	Joystick Control:	No

## Tank Capacities

Fuel Tank:	320 gallons - 1 tank(s)	Holding Tank:	4 gallons - 1 tank(s)
Fresh Water Tank:	43 gallons - 1 tank(s)		

## Accommodations

Total Cabins:	1	Crew Cabins:	-
Total Berths:	2	Crew Berths:	-
Total Sleeps:	2	Crew Sleeps:	-
Total Heads:	1	Crew Heads:	-
Captains Cabin:	-		

## DESCRIPTIONS

The Cobia 344 CC blends high performance, luxury and fishing smarts into a stunning package that will impress everyone from the sunset cruiser to the serious tournament angler. The double-stepped hull is fast, yet responsive and easy to drive, and provides a stable platform while at anchor or drifting. A level floor stem to stern makes for sure-footed maneuverability throughout the boat and the 11'2" beam means plenty of space and walk-around room even with a full crowd onboard.

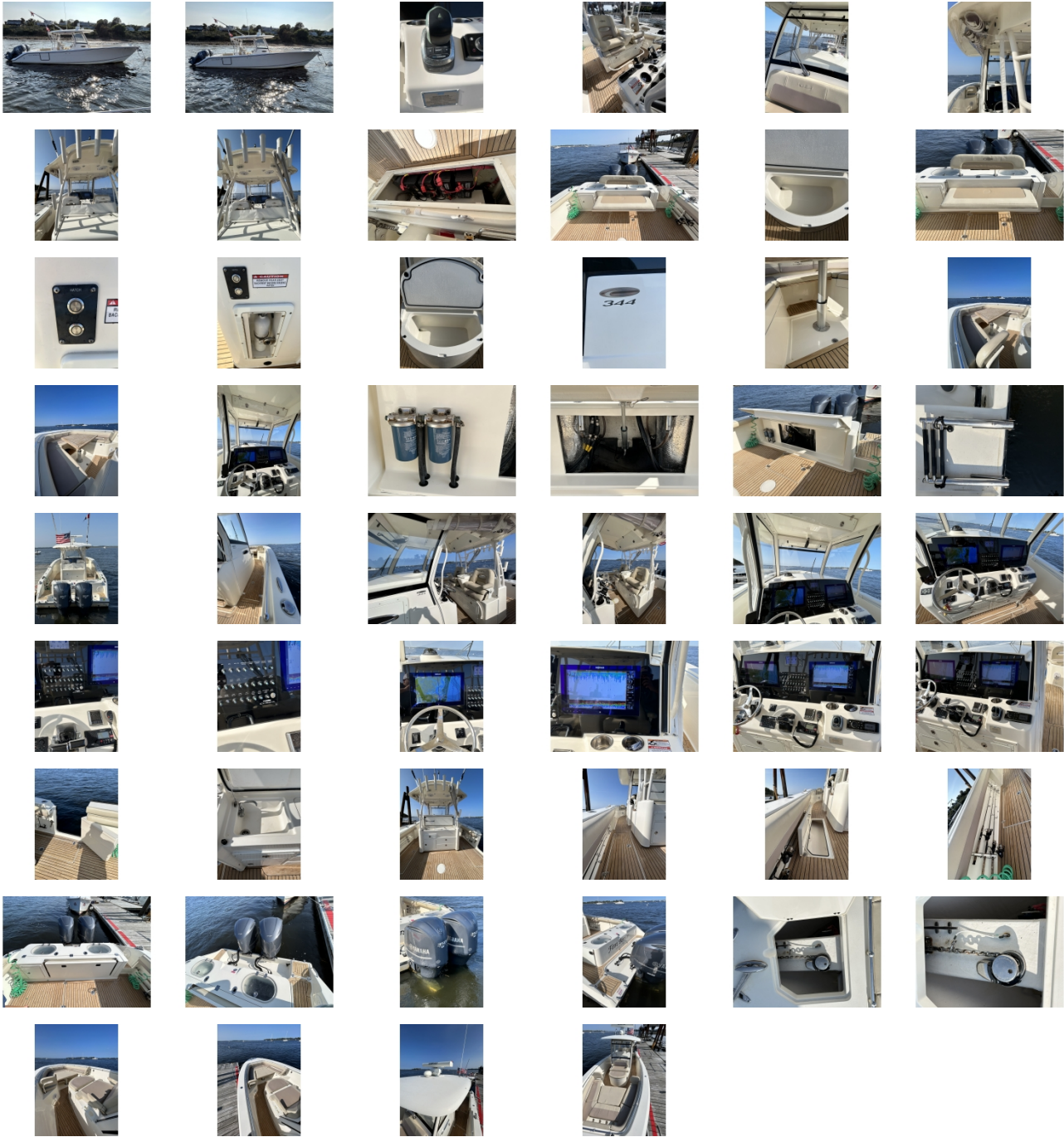
Though the 344CC is elegantly appointed with a console berth and dedicated seating for up to 13 passengers, it's fully fish ready for the serious angler with below-deck hidden locking rod storage, twin 42-gallon baitwells with optional pressurizing pump box plumbing system and 2 huge macerated in-floor fishboxes. The tackle station has a covered sink and bait prepping area and enough storage space to accommodate rigs and terminal gear for everything from grouper to marlin. Plus, it's designed to offer a comfortable rear facing perch for watching baits when trolling.

Additional smart touches include a standard bow table that electronically adjusts to create a huge sun lounge area or can be fully recessed into the floor for full bow access. An inward opening side door makes dockside boarding, disembarking for a dive or hauling aboard a big tuna safe and hassle free. The bilge is accessed through a large door that opens on demand via a heavy-duty electric ram and the main rigging and plumbing is easily reached through the in-floor lazarette.

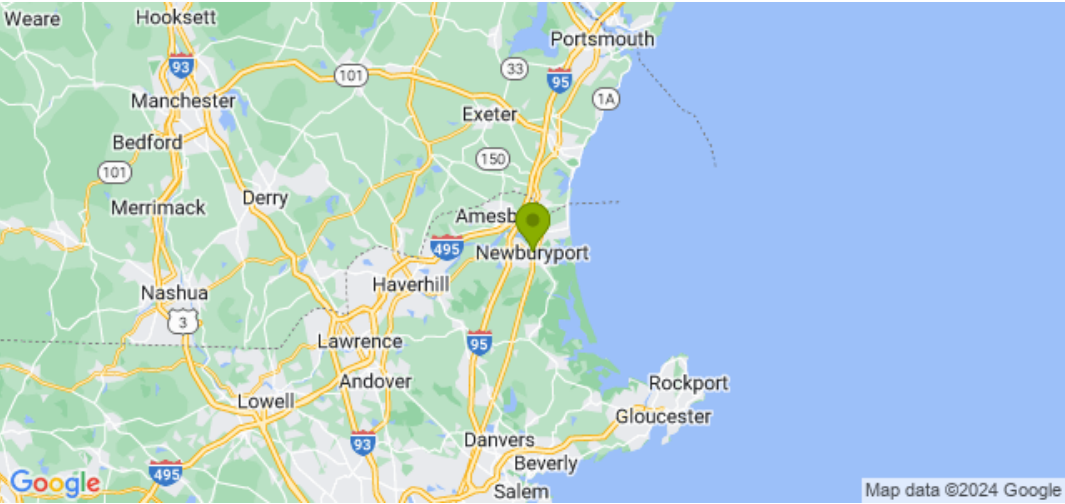
As with the rest of the 344 CC, the helm area is the perfect fusion of form and function. Independent convertible bolsters are spaced between an armrest console that has drink holders and a pocket contents box. The dash comes standard with Yamaha's Command link upgrade display and Optimus electric power steering and can be enhanced with the optional master command suite that includes an acrylic infinity dash with twin 16" Simrad units, radar, C-zone electric switching and auto-pilot. Optimus joy stick control and integrated Fusion stereo options round out the latest in command and control offerings.



GALLERY



LOCATION MAP





# American Marine & Boat Sales

---

*The Power Boat Specialists*

**NICK KATSOULIS**  
American Marine & Boat Sales  
58 R Merrimac St. 2nd floor  
Newburyport, MA, US  
Office: 978-462-2323  
Mobile: 978-462-2323  
[nick@usedpowerboats.com](mailto:nick@usedpowerboats.com)