



American Marine & Boat Sales
The Power Boat Specialists

NICK KATSOU LIS
American Marine & Boat Sales
58 R Merrimac St. 2nd floor
Newburyport, MA, US
Office: 978-462-2323
Mobile: 978-462-2323
nick@usedpowerboats.com

2001 Tiara Yachts 2900 Coronet

Boat Type: Cruiser

Address: Newburyport, MA, US

Price: \$25,000



OVERVIEW

Brand new soft good just installed . Powered by Twin Crusader inboards (fresh water cooled) 790 Hrs . local northern boat, well equipped 2900 Coronet , Gps , Radar ,Windlass

The Boat has transom moisture issues !!!!! This is why the boat is priced like this !!!!!

The 2900 Coronet is an attractively priced sport cruiser with a great deal of versatility, unique styling with a huge cockpit plus a unique curved reverse transom. She's constructed on a modified-V hull with a wide beam and a substantial 19 degrees of transom deadrise. By design, the Coronet's emphasis is on open-air enjoyment and her large single-level cockpit will seat eight in comfort. The engines are under the two seat boxes, and the entire forward section of the deck can be electrically raised for access to the motors. Aside from the generous seating arrangements, the cockpit is equipped with a wet bar aft of the helm seat as well as coaming bolsters and a centerline transom door. The high windshield is notable, not just for it's sturdy construction, but for the reverse-angled spray guard along the top. Below decks, the Coronet's interior provides berths for two with an enclosed head, mini-galley, and a teak-and-holly cabin sole. Keeping with the Tiara fleet she retains the superb fit and finish seen in all Tiara models.

Specs

SPECIFICATIONS

L.O.A. without Standard Pulpit and Swim

Platform ...29'2"

L.O.A. with Standard Pulpit and Swim

Platform ...31'7"

Beam ... 11'4"

Approximate Dry Weight ...

10,000 lbs. - 4,540 kg

Standard Fuel Capacity ...

200 U.S. gallons

Sleeping Accommodations ... 2

Water Capacity ... 30 U.S. gallons

Holding Tank Capacity ...

20 U.S. gallons

Cockpit Length ... 13'6"

STANDARD EQUIPMENT

HULL & DECK

- White gelcoat hull and deck
- Constructed with a water barrier outer gelcoat layer and hand-laid fiberglass with a special formulated resin
- Wood and foam core stringers, vacuum sealed and encapsulated by hand-laid fiberglass, are integrated to hull
- Bronze seacocks and all underwater thru-hull fittings
- Hullside exhaust
- Molded-in hullside ventilation
- Black gelcoat bootline
- Recessed trim tabs
- Removable bilge grate

DECK

- Tiara custom diamond pattern non-skid deck and cockpit surface
- Custom welded aluminum windshield with Solex® 1/4" tempered safety glass, center hinged ventilating section with adjuster, and curved side windows with handrails
- One aluminum forward deck hatch with adjuster and screen
- One piece welded 316L S.S. bow rail with pulpit, staff, and Tiara burgee
- Flush forward anchor locker with over board drain
- Molded-in fiberglass bow pulpit
- Foredeck cleat
- Two (2) chrome bronze hawse pipes
- 316L S.S. rub rail
- Four (4) 316L S.S. 10" mooring cleats
- Two (2) 316L S.S. 10" spring cleats
- Fiberglass covering boards

COCKPIT

- White poly bi-fold companionway door with lock
- Fiberglass navigation chart area with handrail, drink holders, and storage
- Tiara hinged helm console (Charcoal Gray), with full flush mount electronics capability
- 12V outlet at helm
- Drink holders (2)-helm
- Helm bench seat forward with built-in entertainment center including molded-in sink, fresh water, hinged cutting board, and 2 insulated storage compartments
- Aft facing bench seat, starboard
- Curved companion L-lounge with 2 lockable storage compartments
- 120V GFI outlet
- Molded-in cockpit steps
- Port and starboard transom storage compartments
- Cockpit coaming bolsters
- Self-draining cockpit with scupper drains
- Reverse curved transom with molded-in centerline cockpit entry and transom door
- Integrated swim platform with built-in, recessed, folding swim ladder

INTERIOR GROUP

- Mold and mildew resistant vinyl hull and headliner
- Companionway handrail
- Teak and holly veneer cabin floor
- Full hanging locker with shelf
- Companionway steps with hardwood tread and storage compartment below
- AM/FM/CD stereo with remote, amp, and 4 cockpit speakers

GALLEY

- Formica® countertop
- Sink with pressure water system
- Microwave oven
- Storage compartments, upper and lower

FORWARD BERTH

- 6'4" V-berth and filler cushion
- Three under berth storage compartments
- Hullside shelves

HEAD

- Manual head with 20 gallon holding tank
- Full frame Formica® door
- Mirror
- Vanity with sink, pressure water system

INSTRUMENTATION, EQUIPMENT

AND SAFETY

- Tiara master 12V and 120V panels
- Two bank 12V battery system with batteries and battery switches (2 engine batteries and 2 house batteries)
- Shore power inlet, 30 amp
- One (1) 30 amp 50' shore power cord
- Charge® battery charger (1), 15 amp
- Teleflex® hydraulic steering system with 17" S.S. destroyer wheel
- Teleflex® mechanical engine controls
- High speed bronze axe head rudders and struts
- Aquamet® 19 S.S. prop shafts
- Zincs, transom and shafts
- Raw water intake strainers
- Dual VDO® Ocean engine instrumentation includes: tachometers, volt meters, fuel gauge, temperature gauges, hour meters, oil pressure gauges
- Fresh water cooling, main engines
- Anti-corrosion barrier coated 200 gallon fuel tank w/electric gauge
- HF-743T Ritchie® compass
- Engine room lighting
- Water cooled shaft logs
- Two Racor® fuel filters/water separators (diesel only)
- Twin Vernay® mufflers
- FE-241 fire extinguisher system, engine room
- Two windshield wipers w/washers
- Engine room insulation
- Fresh water tank, 30 gallon
- Interior lighting package
- Cockpit courtesy lights
- Engine hatch lifter, electric
- Two bilge blowers
- Single horn
- Two automatic bilge pumps
- Two fire extinguishers, hand-held
- Carbon monoxide detector
- Smoke detector
- NMMA Yacht Certification
- U.S.C.G. and International lighting
- U.S.C.G. and B.I.A. ventilation

SPECIFICATIONS

Basic Information

Manufacturer:	Tiara Yachts	Vessel Name:	Simple Pleasures
Model:	2900 Coronet	Boat Type:	Cruiser
Year:	2900 Coronet	Hull Material:	Fiberglass
Category:	Power	Hull Type:	Modified Vee
Condition:	Used	Hull Color:	white
Location:	Newburyport, MA, US	Designer:	
Available for sale in U.S. waters:	Yes	Flag of Registry:	

Dimensions & Weight

Length:	29 ft - 8.84 meter	Draft - max:	2 ft 8 in - 0.81 meter
LOA:	31 ft 7 in - 9.63 meter	Bridge Clearance:	-
Beam:	11 ft 4 in - 3.45 meter	Dry Weight:	10000 lb - 3048 meter

Engine

Make:	Crusader	Engine Type:	Inboard
Model:	5.7	Drive Type:	Direct Drive
Engine(s):	2	Fuel Type:	Gas/Petrol
Hours:	790	Horsepower:	320 (Individual), 640 (combined)
Cruise Speed:	25 MPH	Max. Speed:	33 MPH
Range:	197 Mi	Joystick Control:	No

Tank Capacities

Fuel Tank:	200 gallons - 1 tank(s)	Holding Tank:	-
Fresh Water Tank:	30 gallons - 1 tank(s)		

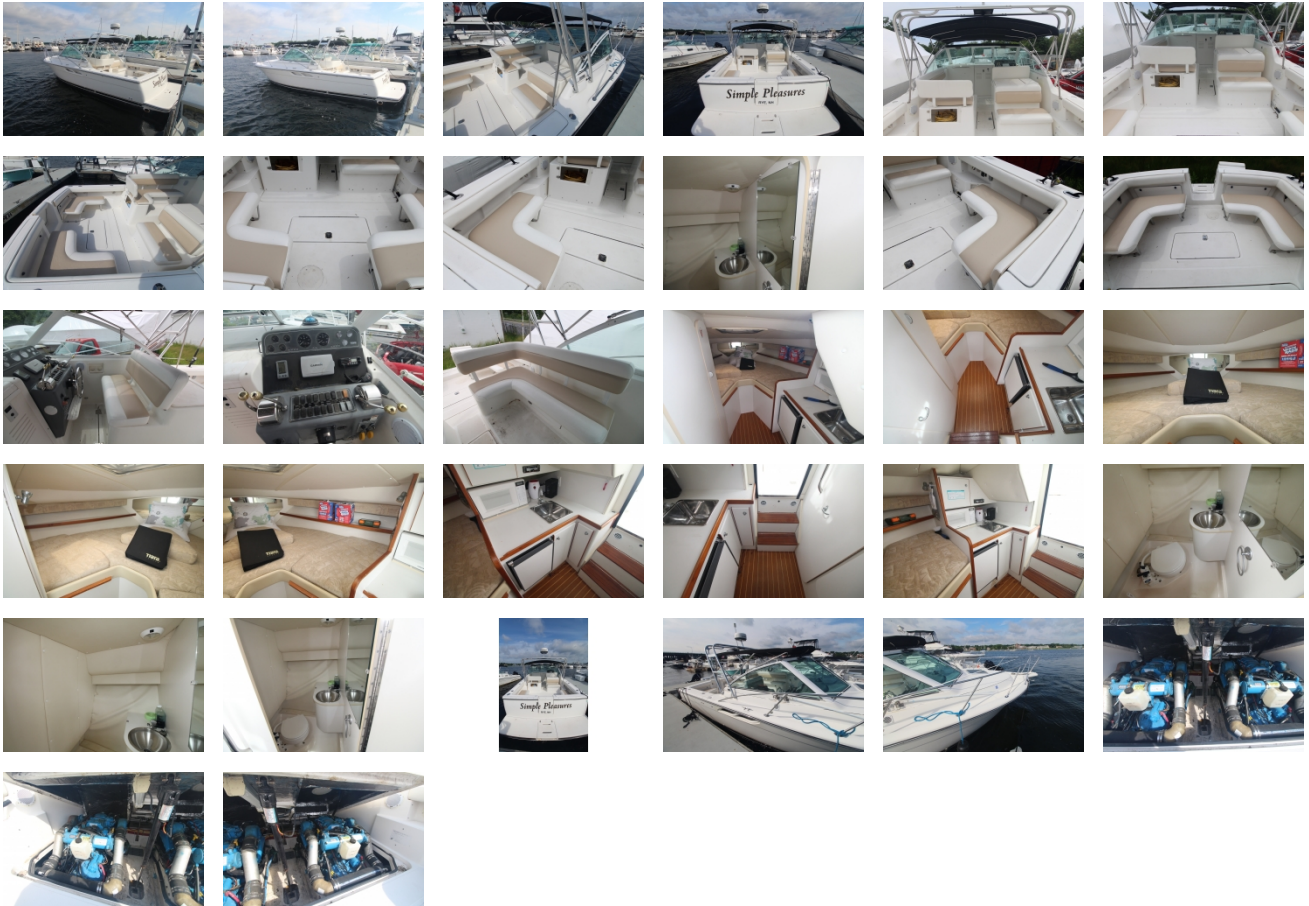
Accommodations

Total Cabins:	1	Crew Cabins:	-
Total Berths:	2	Crew Berths:	-
Total Sleeps:	-	Crew Sleeps:	-
Total Heads:	1	Crew Heads:	-
Captains Cabin:	-		

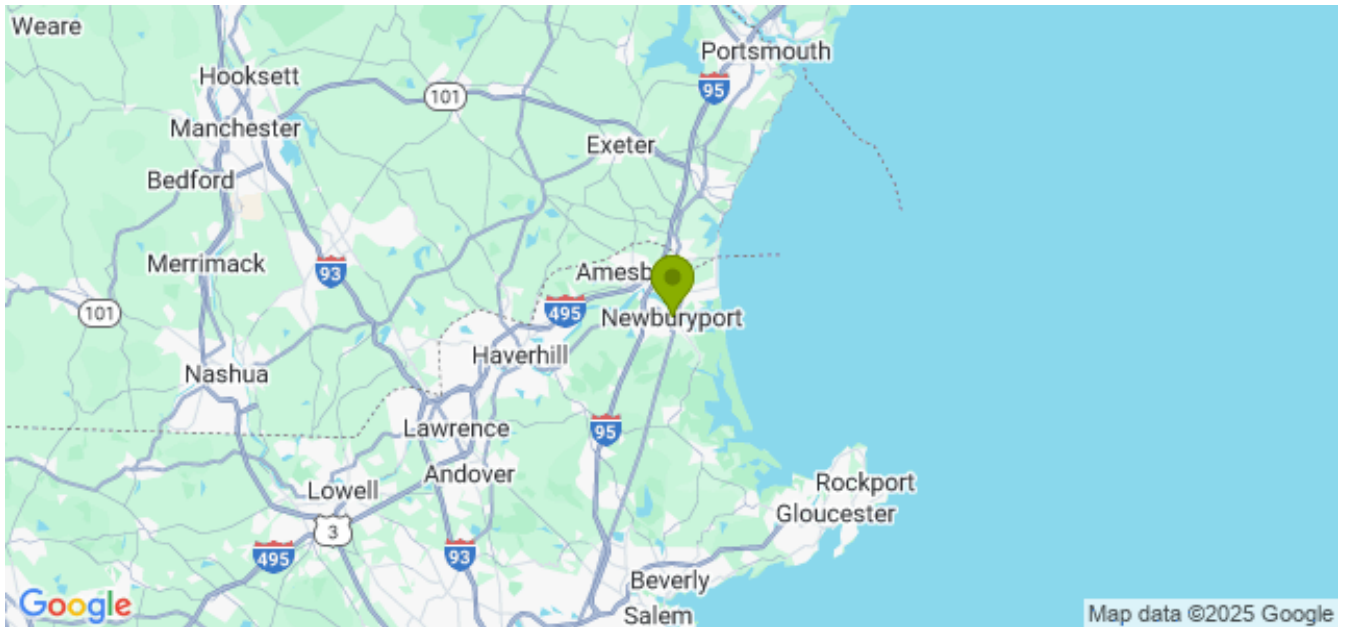
DESCRIPTIONS

The Tiara 2900 Coronet offers great versatility, unique styling, and an expansive list of features and equipment. Most visible among the exterior design features are the curved reverse transom, with centerline cockpit entry, and the fully integrated 24-inch swim platform, with built-in ladder. The cockpit has standard seating for 6 - 8, and optional transom lounges increase seating to 10 -12. The overnight sleeper cabin is accessed thru an acrylic bifold companionway door, and features a large 6 foot, 4 inch V-berth, mini galley with microwave, sink and storage, private head (manual) with vanity, and hanging locker. An optional refrigerator, and electric toilet is also available.

GALLERY



LOCATION MAP



American Marine & Boat Sales
The Power Boat Specialists

NICK KATSOULIS
 American Marine & Boat Sales
 58 R Merrimac St. 2nd floor
 Newburyport, MA, US
 Office: 978-462-2323
 Mobile: 978-462-2323
 nick@usedpowerboats.com